



Harmonized Census Geography in IPUMS International for Spatio-temporal Research: Examples of Sub-national Trends in select SDG Indicators from Developing Countries

Lara Cleveland

**Minnesota Population Center
University of Minnesota**

**15th Congress of IAOS
December 6, 2016
Abu Dhabi**

cleveland@umn.edu

Acknowledgements

Participating country NSOs

Co-author: Sula Sarkar

Research assistants:

Ding Fei, Majory Silisyene



IPUMS

International

[Home](#) | [Select Data](#) | [FAQ](#) | [Help](#) | [Logout](#)

PROJECT

[About IPUMS-I](#)
[How to Cite IPUMS-I](#)
[User Registration and Login](#)

DATA

[Browse and Select Data](#)
[Download Your Data Extract](#)
[Geography and GIS](#)
[Supplemental Data Files](#)
[Analyze Data Online](#)

SAMPLES

[Sample Descriptions](#)
[Variance Estimation](#)
[Source Documents](#)

RESOURCES

[Help](#)
[User Forum](#)
[Bibliography](#)
[International Partners](#)
[Teaching with IPUMS](#)

Integrated Public Use Microdata Series, International

census microdata for social and economic research

IPUMS-International is a project dedicated to collecting and distributing census data from around the world. Its goals are to:

- Collect and preserve data and documentation
- Harmonize data
- Disseminate the data absolutely free!

79 countries - 258 censuses - 560 million person records

Source data for IPUMS-International are generously provided by participating National Statistical Offices

IPUMSI News

NEW! 20 samples added
NEW! Geography variables revised
 Online tabulator
 Class accounts
[Latin America project extended](#)
 Integrated DHS project funded
[... All news items](#)

MPC Data Projects

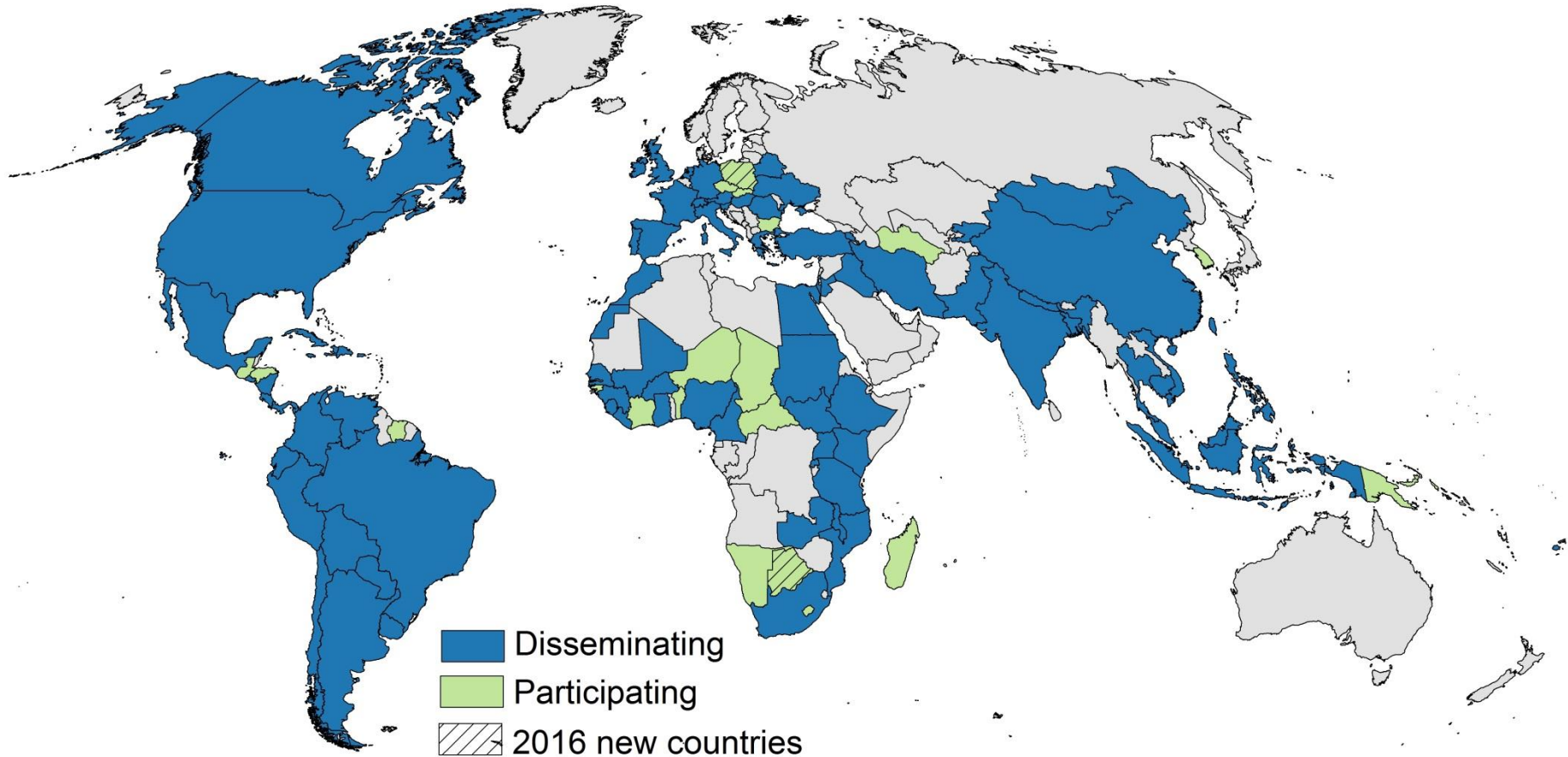
[IPUMS-USA and others](#)



Sign up
to receive News of interest to IPUMS-

International data users and producers.

IPUMS Microdata Availability



82 countries – 277 censuses – 614 million person records

IPUMS Samples per Country

Argentina	5	Fiji	5	Malaysia	4	Saint Lucia	2
Armenia	2	France	8	Mali	2	Senegal	2
Austria	5	Germany	4	Mexico	8	Sierra Leone	1
Bangladesh	3	Ghana	3	Mongolia	2	Slovenia	1
Belarus	2	Greece	5	Morocco	3	South Africa	4
Bolivia	3	Guinea	2	Mozambique	2	South Sudan	1
Botswana	4	Haiti	3	Nepal	1	Spain	4
Brazil	6	Hungary	5	Netherlands	3	Sudan	1
Burkina Faso	3	India	6	Nicaragua	3	Switzerland	4
Cambodia	2	Indonesia	9	Nigeria	5	Tanzania	3
Cameroon	3	Iran	2	Pakistan	3	Thailand	4
Canada	5	Iraq	1	Palestine	2	Trinidad & Tobago	4
Chile	5	Ireland	9	Panama	6	Turkey	3
China	3	Israel	1	Paraguay	5	Uganda	2
Colombia	4	Italy	1	Peru	2	Ukraine	1
Costa Rica	5	Jamaica	3	Philippines	3	UK	2
Cuba	1	Jordan	1	Poland	4	USA	7
Dominican Republic	5	Kenya	5	Portugal	4	Uruguay	6
Ecuador	6	Kyrgyz Republic	2	Puerto Rico	6	Venezuela	4
Egypt	3	Liberia	2	Romania	4	Vietnam	3
El Salvador	2	Malawi	3	Rwanda	2	Zambia	3
Ethiopia	3						

Harmonization for Comparative Analysis

NSO microdata: census-by-census, limited documentation

IPUMS: simplify comparison across time and place

1. Integrate census samples

- common format for data and metadata
- bring together in common database

2. Harmonize variables

- common codes for variables across all data files
- composite coding structure
 - first digit = general code (common to many censuses)
 - trailing digits = detailed codes

3. Disseminate customized pooled data files

- user downloads custom data extracts
- pooled samples containing only selected variables

Translation Table

Input

**Bangladesh
2011**

**Mexico
1970**

**Kenya
1999**

1 = Unmarried	1 = Married, civil & relig	1 = Never married
2 = Married	2 = Married, civil	2 = Monogamous
3 = Widowed	3 = Married, religious	3 = Polygamous
4 = Divrc or separated	4 = Consensual union	4 = Widowed
	5 = Widowed	5 = Divorced
	6 = Divorced	6 = Separated
	7 = Separated	
	8 = Single	

Translation Table

Harmonized

Code **Label**

1	Single
2	Married or in union
2	▶
2	▶
2	▶
2	▶
2	▶
2	▶
2	▶
2	▶
3	Divorced or separated
3	
3	
4	Widowed

Variable Page: Metadata Documentation

MARST

Marital status

Group: [Demographic — PERSON](#)

Add to cart

Change samples

Description

Comparability

Universe

Codes

Availability

Questionnaire Text

Source Variables

Description

MARST describes the person's current marital status according to law or custom. Individuals who remarried should report the status relevant to their most recent marriage. Census instructions rarely explicitly limit marital status to strictly legal unions.

Note regarding universe: The lowest age at which a person can be anything but "never married" varies among samples.

IPUMS Customizable Data Extract System

Home
Ownership

Relation
to Head

Age

Marital
Status

Occupation

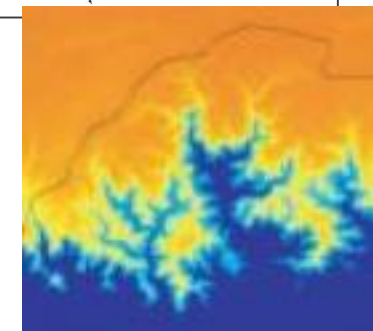
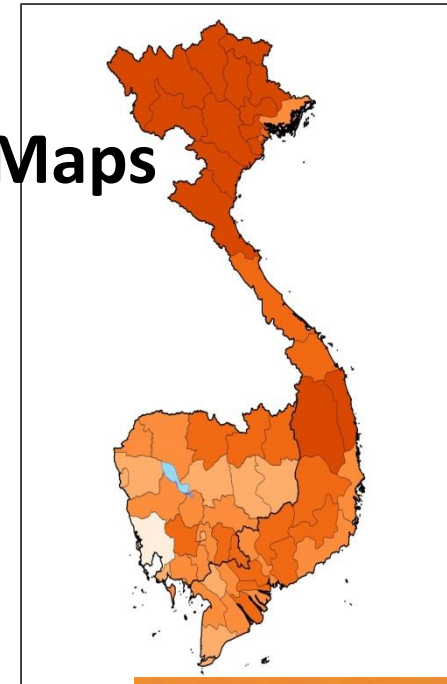
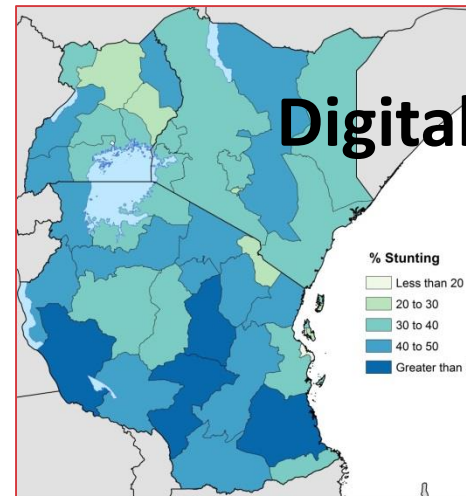
```
00000190001100001000000011000100711221000001992221233450999
00000190001100002000000022100210552221017001042221233100999
0000019000110000300200133000300312110000001002440011000211
00000190001100004002001330003002911110000001992222111000762
00000200001100001000000011000100441221000001992440011000532
00000200001100002000000022100210402221028001032331111000532
00000200001100003002001330003001211110000001992221233300999
00000200001100004002001330003000821110000001992112000000999
00000210001100001003000110001004411110000001992331111000123
00000210001100002003000444105004311110000001992440011000744
```

```
1001000071210999
1002100055210999
1003000031100211
1003000029100762
1001000044210532
1002100040210532
1003000012100999
1003000008100999
1001000044100123
1004410043100744
```

Data extract

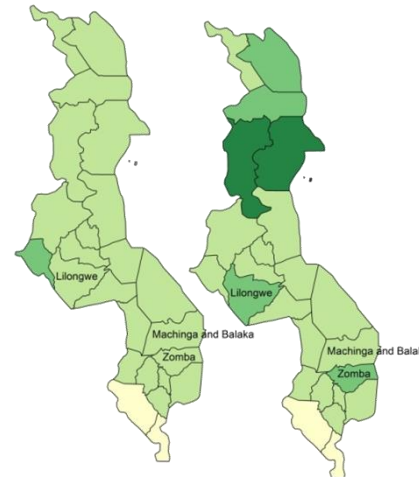
Geography in the microdata

H01100013200401313
 P0110011322066193502001
 P0110021331034196705001
 P0110031331042195902001
 H02100012200401313
 P0210011221066583502001
 P0210021322066313202002
 P0210031331004006705001
 P0210041331002005902001
 H03100012200401313
 P0310011221056153802001



% Urban for 3 districts of Malawi (Censuses 1987-2008)

Region	Year	
	1998	2008
Mzimba/Mzuzu city	16.3	17.9
Lilongwe/Lilingwe city	32.6	34.2
Blantyre/ Blantyre city	62.3	58.2



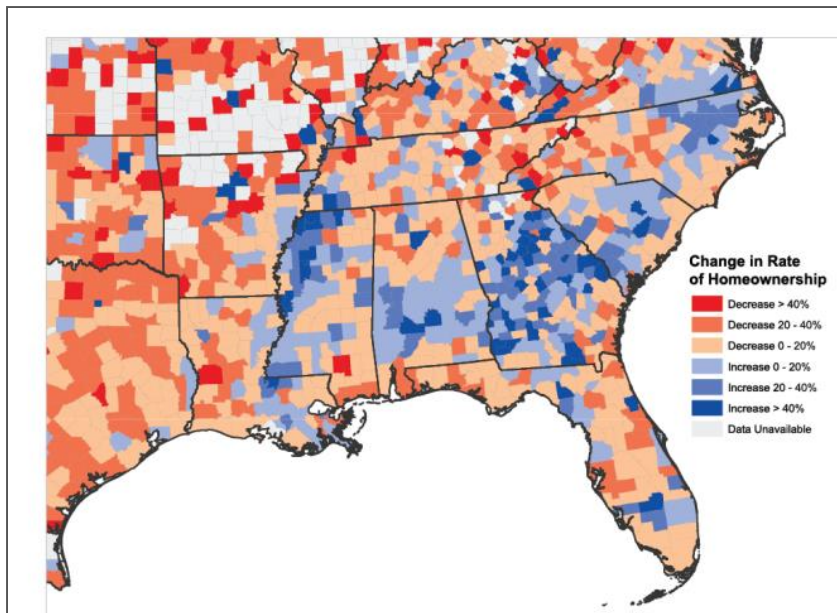
Spatial challenges: Estimation

How to summarize information

- Average
- Max
- % Change
- many others ...

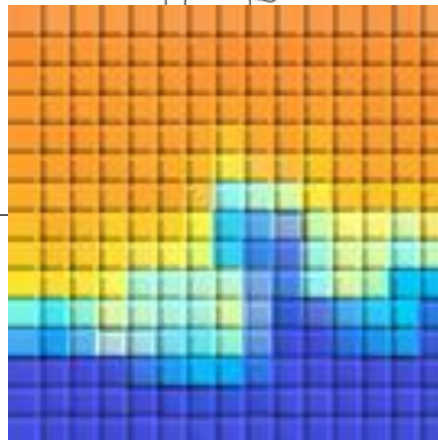
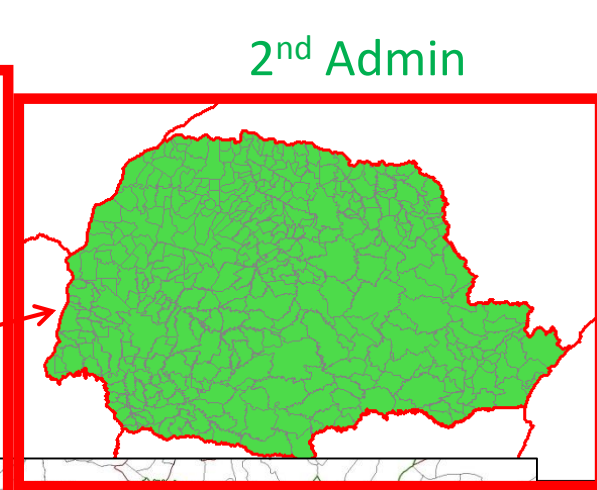
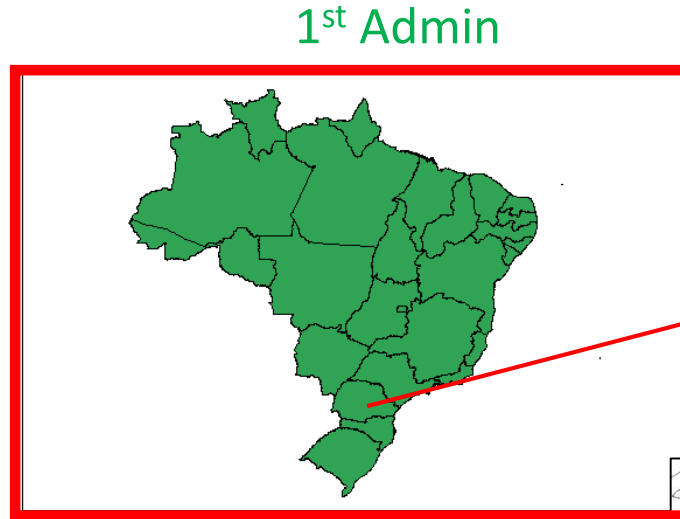
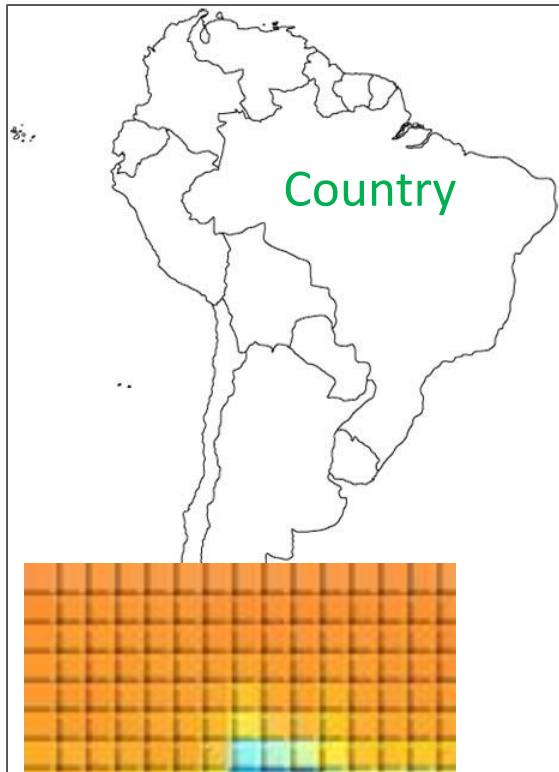
Microdata:

Appropriate summaries
Test multiple methods

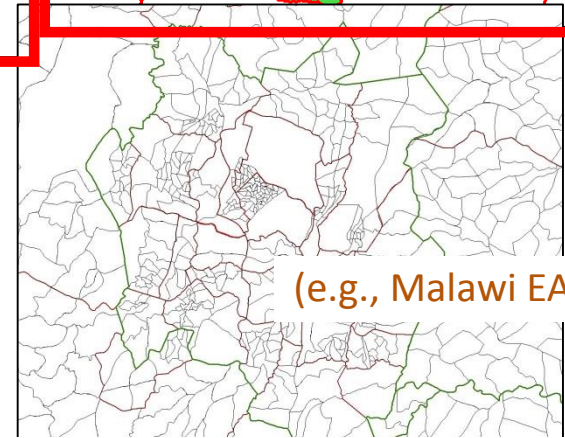
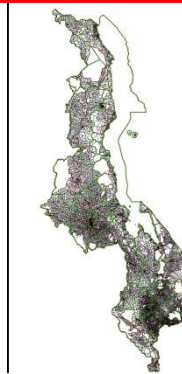


H01100013200401313
P0110011322066193502001
P0110021331034196705001
P0110031331042195902001
H02100012200401313
P0210011221066583502001
P0210021322066313202002
P0210031331004006705001
P0210041331002005902001
H03100012200401313
P0310011221056153802001

Spatial challenges: Scale

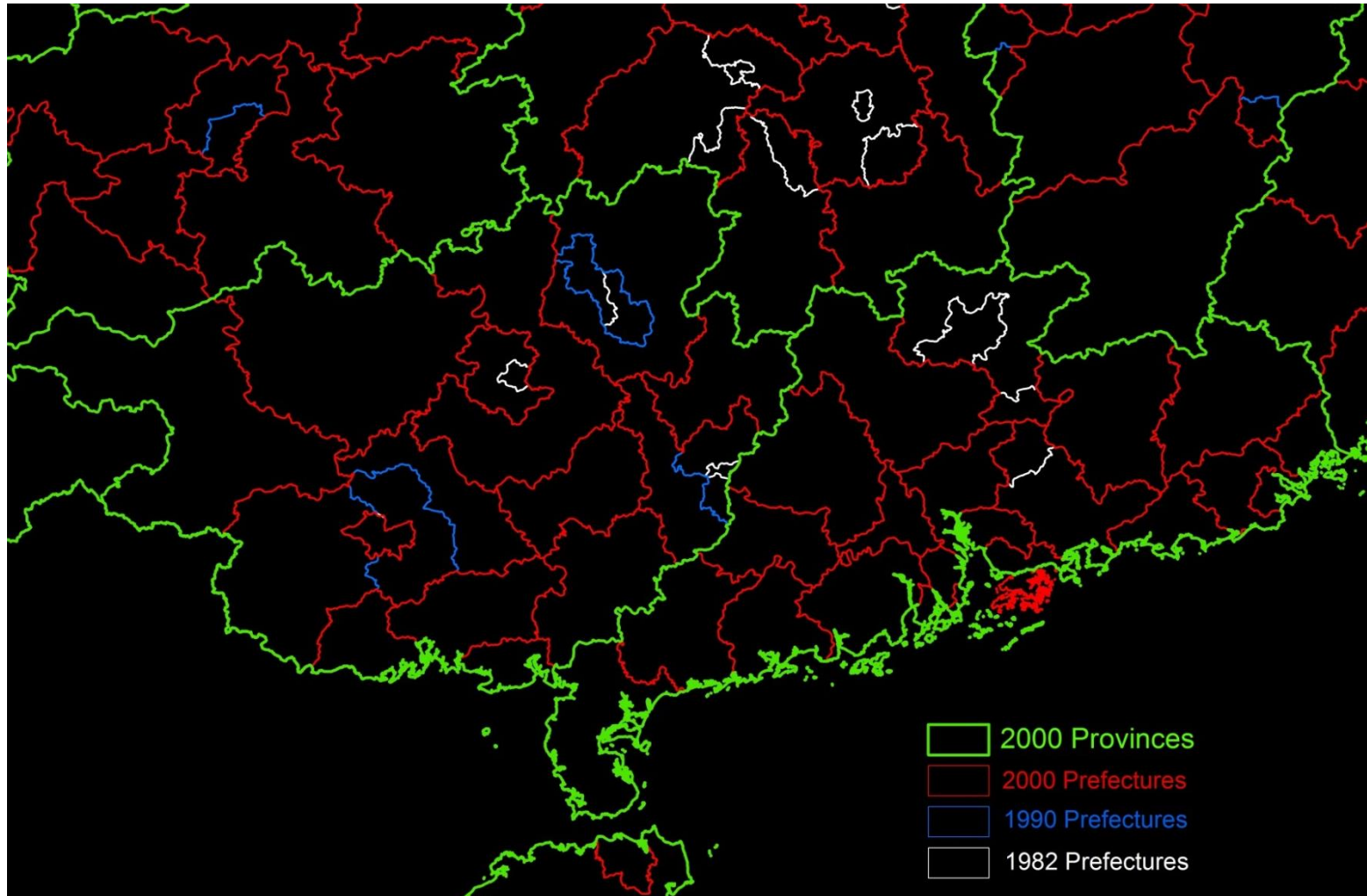


Other data sources:
E.g., grid cell/raster
(uniform spatial size)



Ideal solution:
small units with uniform population size

Space + Time



GUANGXI, CHINA 1982-2000

Harmonizing geographic units by name

code	label	mw1987a	mw1998a	mw2008a
rectype	DISTMW	H	H	H
columns	District, Malawi			
proj1		MW87A094	MW98A021	MW08A022
proj2				
	# Northern Region			
101	Chitipa	101 = Chitipa {1982}	101 = Chitipa {2581}	101 = Chitipa {3687}
102	Karonga	102 = Karonga {2787}	102 = Karonga {4011}	102 = Karonga {5817}
103	Nkhata Bay and Likoma	103 = Nkhata Bay {2935}	103 = Nkhata Bay {3340}	103 = Nkhata Bay {4303}
103	"		106 = Likoma {155}	106 = Likoma {199}
104	Rumphi	104 = Rumphi {1992}	104 = Rumphi {2539}	104 = Rumphi {3930}
105	Mzimba	105 = Mzimba {9355}	105 = Mzimba {11728}	105 = Mzimba {14069}
107	Mzuzu			107 = Mzuzu city {2739}
	# Central Region			
201	Kasungu	201 = Kasungu {7245}	201 = Kasungu {9687}	201 = Kasungu {12629}
202	Nkhota Kota	202 = Nkhotakota {3930}	202 = Nkhota Kota {5006}	202 = Nkhota Kota {6126}
203	Ntchisi	203 = Ntchisi {2639}	203 = Ntchisi {3617}	203 = Ntchisi {4644}
204	Dowa	204 = Dowa {7180}	204 = Dowa {9045}	204 = Dowa {12720}
205	Salima	205 = Salima {4713}	205 = Salima {5869}	205 = Salima {7493}
206	Lilongwe	206 = Lilongwe {22720}	206 = Lilongwe {31102}	206 = Lilongwe {27703}
207	Mchinji	207 = Mchinji {5687}	207 = Mchinji {7086}	207 = Mchinji {10034}
208	Dedza	208 = Dedza {9551}	208 = Dedza {11404}	208 = Dedza {15173}
209	Ntcheu	209 = Ntcheu {8114}	209 = Ntcheu {8558}	209 = Ntcheu {11702}
210	Lilongwe city			210 = Lilongwe city {15341}
	# Southern Region			
301	Mangochi	301 = Mangochi {12315}	301 = Mangochi {15214}	301 = Mangochi {18297}
302	Machinga	302 = Machinga {7595}	302 = Machinga {9020}	302 = Machinga {11369}
303	Zomba	303 = Zomba {11033}	303 = Zomba {13836}	303 = Zomba {14651}
304	Chiradzulu	304 = Chiradzulu {5002}	304 = Chiradzulu {5879}	304 = Chiradzulu {7114}
305	Blantyre	305 = Blantyre {14452}	305 = Blantyre {19929}	305 = Blantyre {8509}
306	Mwanza	306 = Mwanza {2833}	306 = Mwanza {3258}	306 = Mwanza {2596}
307	Thyolo	307 = Thyolo {10232}	307 = Thyolo {11301}	307 = Thyolo {14203}
308	Mulanje	308 = Mulanje {10041}	308 = Mulanje {10445}	308 = Mulanje {12445}
309	Phalombe	309 = Phalombe {5319}	309 = Phalombe {5965}	309 = Phalombe {7505}
310	Chikwawa	310 = Chikwawa {6961}	310 = Chikwawa {8002}	310 = Chikwawa {10081}
311	Nsanje	311 = Nsanje {4689}	311 = Nsanje {4357}	311 = Nsanje {5169}
312	Balaka	312 = Balaka {4968}	312 = Balaka {6071}	312 = Balaka {7931}
313	Neno			313 = Neno {2620}
314	Zomba city			314 = Zomba city {2688}
315	Blantyre city			315 = Blantyre city {16377}

1987	Rural %	Urban %
Mzimba	88.1	11.9
Lilongwe	77.6	22.4
Blantyre	42.0	58.0

1998	Rural %	Urban %
Mzimba	81.7	18.3
Lilongwe	67.4	32.6
Blantyre	37.7	62.3

2008	Rural %	Urban %
Mzimba	96.2	3.8
Lilongwe	100	0
Blantyre	100	0

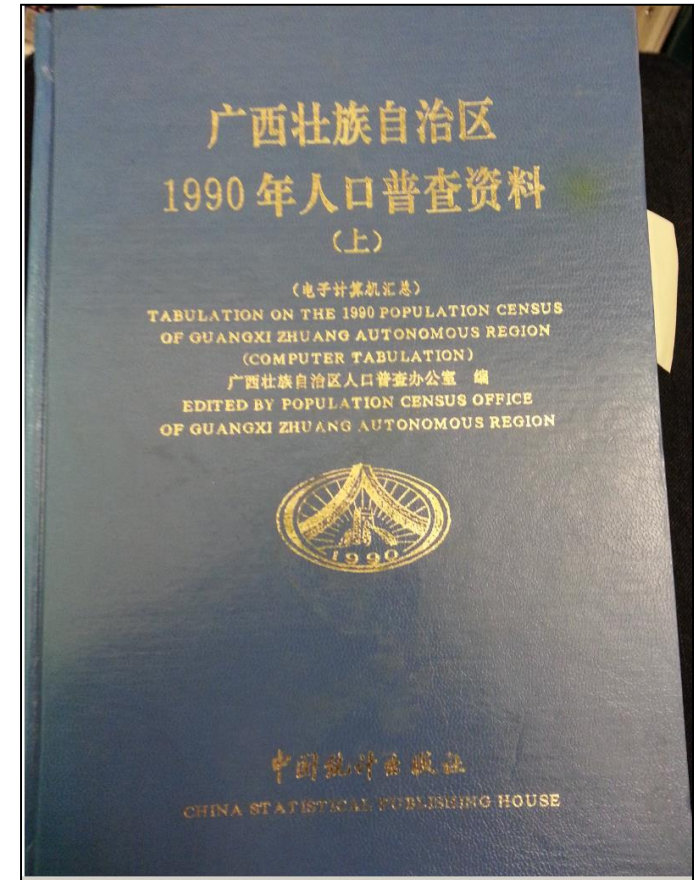
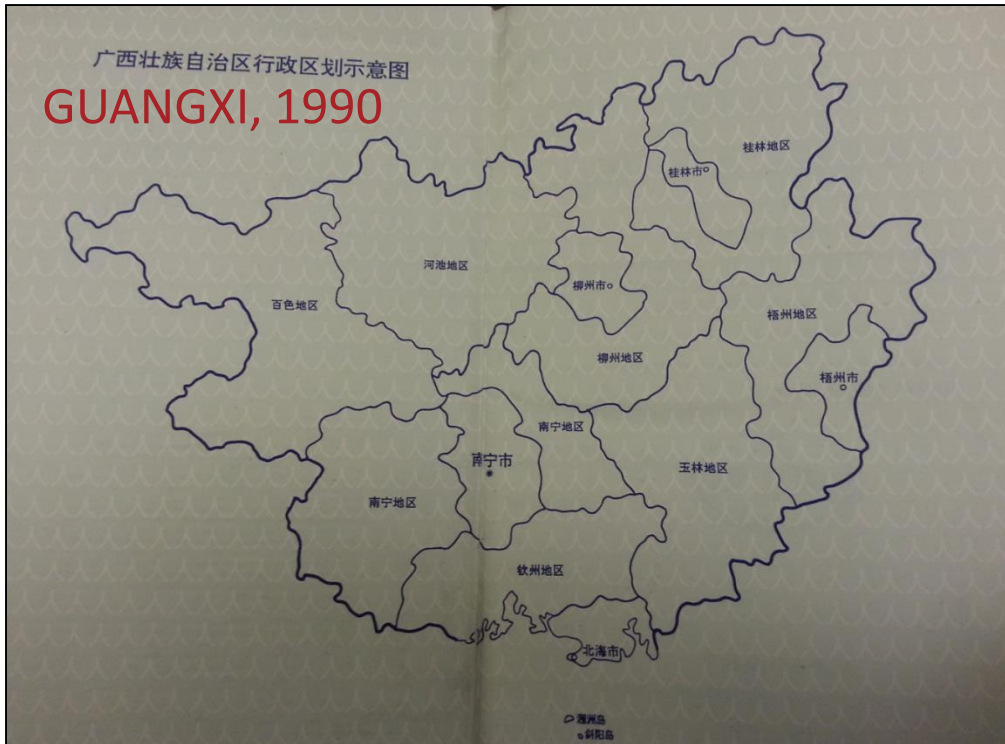
Harmonizing by space and time

code	label	mw1987a	mw1998a	mw2008a
rectype	GEO1_MW	H	H	H
columns	Malawi, District 1998 - 2008 [Level 1; consistent boundaries, GIS]			
# Northern Region				
454101	Chitipa	101 = Chitipa {1982}	101 = Chitipa {2581}	101 = Chitipa {3832}
454102	Karonga	102 = Karonga {2787}	102 = Karonga {4011}	102 = Karonga {5758}
454103	Nkhata Bay, Likoma			
454103	Nkhata Bay	103 = Nkhata Bay {2781}	103 = Nkhata Bay {3340}	103 = Nkhata Bay {4311}
454103	Likoma	106 = Likoma {154}	106 = Likoma {155}	106 = Likoma {229}
454104	Rumphi	104 = Rumphi {1992}	104 = Rumphi {2539}	104 = Rumphi {3808}
454105	Mzimba, Mzuzu city			
454105	Mzimba (1998)	105 = Mzimba {9355}	105 = Mzimba {11728}	
454105	Mzimba (2008)			105 = Mzimba {14314}
454105	Mzuzu city (2008)			107 = Mzuzu City {3043}
# Central Region				
454201	Kasungu	201 = Kasungu {7245}	201 = Kasungu {9687}	201 = Kasungu {13096}
454202	Nkhota Kota	202 = Nkhotakota {3930}	202 = Nkhota Kota {5006}	202 = Nkhota Kota {6273}
454203	Ntchisi	203 = Ntchisi {2639}	203 = Ntchisi {3617}	203 = Ntchisi {4754}
454204	Dowa	204 = Dowa {7180}	204 = Dowa {9045}	204 = Dowa {12407}
454205	Salima	205 = Salima {4713}	205 = Salima {5869}	205 = Salima {7737}
454206	Lilongwe, Lilongwe city			
454206	Lilongwe (1998)	206 = Lilongwe {22720}	206 = Lilongwe {31102}	
454206	Lilongwe (2008)			206 = Lilongwe {27562}
454206	Lilongwe city (2008)			210 = Lilongwe City {15651}
454207	Mchinji	207 = Mchinji {5687}	207 = Mchinji {7086}	207 = Mchinji {9917}
454208	Dedza	208 = Dedza {9551}	208 = Dedza {11404}	208 = Dedza {14652}
454209	Ntcheu	209 = Ntcheu {8114}	209 = Ntcheu {8558}	209 = Ntcheu {11312}
# Southern Region				
454301	Mangochi	301 = Mangochi {12315}	301 = Mangochi {15214}	301 = Mangochi {18518}
454302	Machinga	302 = Machinga {7595}	302 = Machinga {9020}	302 = Machinga {11477}
454303	Zomba, Zomba city			
454303	Zomba (1998)	303 = Zomba {11033}	303 = Zomba {13836}	
454303	Zomba (2008)			303 = Zomba {14241}
454303	Zomba city (2008)			314 = Zomba City {2545}
454304	Chiradzulu	304 = Chiradzulu {5002}	304 = Chiradzulu {5879}	304 = Chiradzulu {7226}
454305	Blantyre, Blantyre city			
454305	Blantyre (1998)	305 = Blantyre {14452}	305 = Blantyre {19929}	
454305	Blantyre (2008)			305 = Blantyre {8417}
454305	Blantyre city (2008)			315 = Blantyre City {15631}
454307	Thyolo	307 = Thyolo {10232}	307 = Thyolo {11301}	307 = Thyolo {14254}
454308	Mulanje	308 = Mulanje {10041}	308 = Mulanje {10445}	308 = Mulanje {12776}
454309	Phalombe	309 = Phalombe {5319}	309 = Phalombe {5965}	309 = Phalombe {7568}
454310	Chikwawa	310 = Chikwawa {6961}	310 = Chikwawa {8002}	310 = Chikwawa {9691}
454311	Nsanje	311 = Nsanje {4689}	311 = Nsanje {4357}	311 = Nsanje {5301}
454312	Balaka	312 = Balaka {4968}	312 = Balaka {6071}	312 = Balaka {7569}
454313	Mwanza, Neno			
454313	Mwanza (1998)	306 = Mwanza {2833}	306 = Mwanza {3258}	
454313	Mwanza (2008)			306 = Mwanza {2241}



Map acquisition

- Match IPUMS codes to available map
- Digitize paper maps based on boundary of most recent year
- Align with standardized world map



China 1990

Matching census codes and labels

	A	B	C
1	label	code	freq_wt
5	Shanxi	14	30114000
6	Inner Mor	15	25474100
7	Liaoning	21	42450200
8	jilin	22	26666600
9	Heilongjia	23	38792700
10	Shanghai	31	15437000
11	Jiangsu	32	69573800
12	Zhejiang	33	43348700
13	Anhui	34	67426800
14	Fujian	35	34359600
15	Jiangxi	36	44985600
16	Shandong	37	82738100
17	Henan	41	86806400
18	Hubei	42	56224300
19	Hunan	43	62531200
20	Guangdon	44	62832700
21	Guangxi	45	44642600
22	Hainan	46	7270800
23	Sichuan	51	1.05E+08
24	Guizhou	52	31156500
25	Yunnan	53	37375200
26	Tibet	54	2417500
27	Shaanxi	61	34037900
28	Gansu	62	24195200
29	Qinghai	63	5738600
30	Ningxia	64	3866700
31	Xinjiang	65	15499200

207	4331 Xiangxi Tujia-Miao autonomous prefecture	2048300
208	4401 Guangzhou city	6318500
209	4402 Shaoguan city	2847400
210	4403 Shenzhen city	1697000
211	4404 Zhuhai city	597200
212	4405 Shantou city	8658300
213	4406 Foshan city	2989600
214	4407 Jiangmen city	3424800
215	4408 Zhanjiang city	5408500
216	4409 Maoming city	4897300
217	4412 Zhaoqing city	5260800
218	4413 Huizhou city	2289700
219	4414 Meizhou city	4044300
220	4415 Shanwei city	2194800
221	4416 Heyuan city	2522900
222	4417 Yangjiang city	2178800
223	4418 Qingyuan city	3258100
224	4419 Dongguan city	1721900
225	4420 Zhongshan city	1231600
226	4490 Guangdong province direct administrative area	1291200
227	4501 Nanning city	2904100
228	4502 [no label]	1274200
229	4503 Guilin city	1441900
230	4504 Wuzhou city	628800
231	4505 Beihai city	2050100
232	4521 Nanning prefecture	5882500
233	4522 Luzhou prefecture	3287400
234	4523 Guilin prefecture	3313100
235	4524 Wuzhou prefecture	3240000
236	4525 Yulin prefecture	9860900
237	4526 Baise prefecture	4144700
238	4527 Hechi prefecture	3899700
239	4528 Qinzhou prefecture	2715200
240	4601 Haikou city	577600
241	4602 Sanya city	170300
242	4690 Hainan Province direct administrative area	6522900
243	5101 Chengdu city	9679600
244	5102 Chongqing city	14038100
245	5103 Zigong city	2536300

Xiangning P	Hengshan C	Longlin MMAC
Xianning C	Hengdong C	Xilin C
Jiayu C	Changning C	Hechi P
Puqi C	Yingde C	Hechi C
Tongcheng C	Qingyuan C	Yishan C
Chongyang C	Fogang C	Luocheng C
Tongshan C	Wengyuan C	Huanjiang C
Yangxin C	Lianshan Zhuang-Yao AC	Nandan C
Jingzhou P	Lianan Yao AC	Tian'e C
Jingmen City	Ruyuan Yao AC	Fangshan C
Jiangling C	Yongxing C	Donglan C
Songzi C	Yizhang C	Bama Yao AC
Gong'an C	Zixing C	Du'an Yao AC
Shishou C	Jiahe C	Qinzhou P
Jianli C	Lanwu C	Beihai City
Honghu C	Rucheng C	Shangsi C
Mianyang C	Guidong C	Fangcheng MMAC
Tianmen C	Laiyang C	Qinzhou C
Qianjiang C	Anren C	Lingshan C
Jingmen C	Lingling P	Hepu C
Zhongxiang C	Yongzhou City	Pubei C
Jingshan C	Lingling C	
Xiangyang P	Dong'an C	
Suzhou City	Daoxian C	
Laohou City	Ningyuan C	
Xiangyang C	Jiangyong C	
Zaoyang C	Jianghua Yao AC	
Suxian C	Lanshan C	
Yicheng C	Xintan C	
Nanzhang C	Shuangpai C	
Guanghua C	Huaihua P	
Gucheng C	Huaihua City	
Baokang C	Hongjiang City	
Yunyang P	Qianyang C	
Junxian C	Yuanling C	
Yunxian C	Chenxi C	
Yunxi C	Xupu C	
Zhushan C	Mayang C	
Zhuxi C	Xinhuang Dong AC	
Fangxian C	Zhijiang C	
Shennongjia FR	Huaihua C	
Yichang P	Huitong C	
Yichang C	Jingxian C	
Yidu C	Tongdao Dong AC	
Luxi C	Xiangxi Tujia-Miao AP	
Zhijiang C	Jishou C	
Dangyang C	Luxi C	
Yuan'an C	Fenghuang C	
Xingshan C	Huayuan C	
Zigui C	Baojing C	
Changyang C	Guzhang C	
Wufeng C	Yongshun C	
Enshi P	Dayong C	
Enshi City	Sangzhi C	
Enshi C	Longshan C	
Jianshi C	Guangdong Province	
Badong C	Guangzhou City	
Lichuan C	Conghua C	
Xuan'en C	Xinshuo C	
Xianfeng C	Guilin City	
Lailong Tujia AC	Yangshuo C	
Hefeng Tujia AC	Wuzhou City	
	Zengcheng C	
	Nanning P	
	Nanning City	
	Luzhou City	
	Guilin City	
	Wuzhou City	
	Nanning P	
	Wanxian P	
	Wanxian City	
	Kaixian C	
	Zhongxian C	
	Liangping C	
	Yunyang C	
	Fengjie C	
	Wushan C	
	Wuxi C	
	Chengkou C	
	Fuling P	
	Fuling C	
	Dianjiang C	
	SICHUAN PROVINCE	
	Chengdu City	
	Jintang C	
	Shuangliu C	
	Chongqing City	
	Changshou C	
	Baxian C	
	Qijiang C	
	Jiangbei C	
	Zigong City	
	Rongxian C	
	Dukou City	
	Miyi C	
	Yanbian C	
	Yongchuan P	
	Jiangjin C	
	Hechuan C	
	Tongnan C	
	Tongliang C	
	Yongchuan C	
	Dazu C	
	Rongchang C	
	Bishan C	

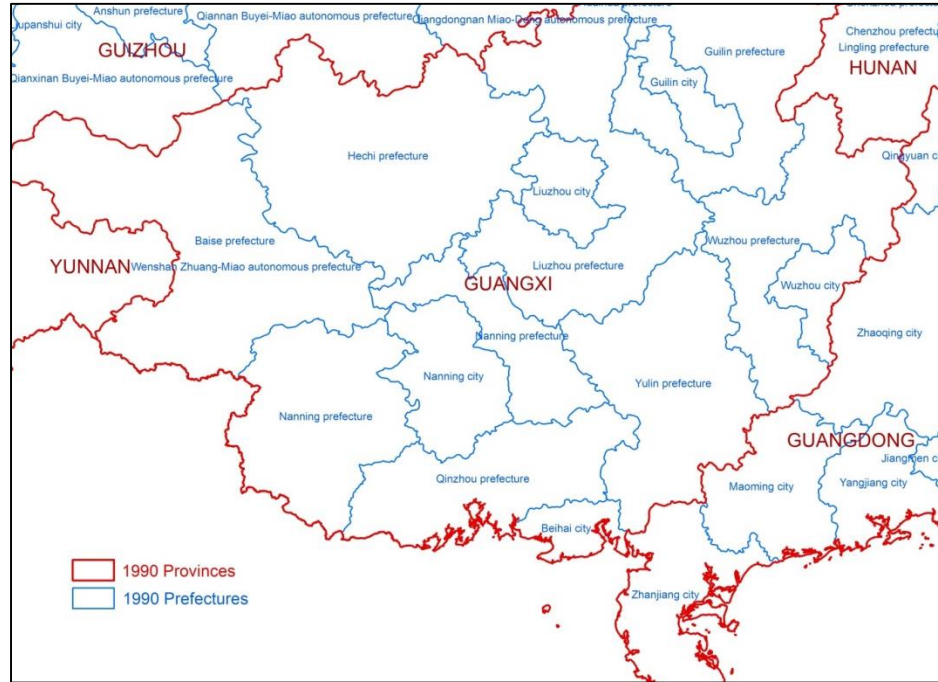
China 1990

Paper maps to digital maps

Digital boundary from most recent year



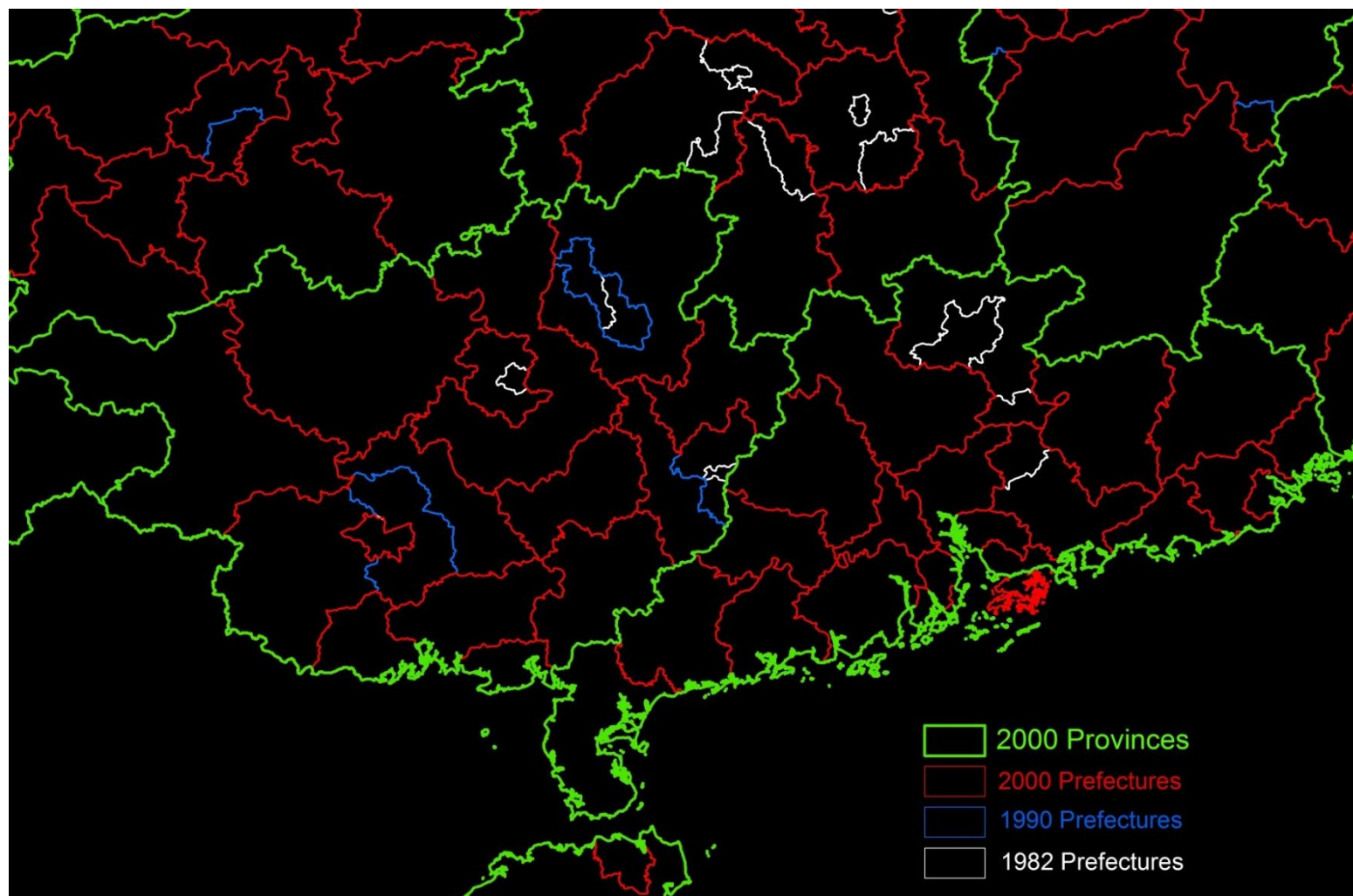
Digital boundary from 1990



- Digitization is based on available digital boundary of most recent year
- Most recent digital boundary source: Global Administrative Areas (GADM), Second Administrative Level Boundaries (SALB), National Statistical Offices (NSO)

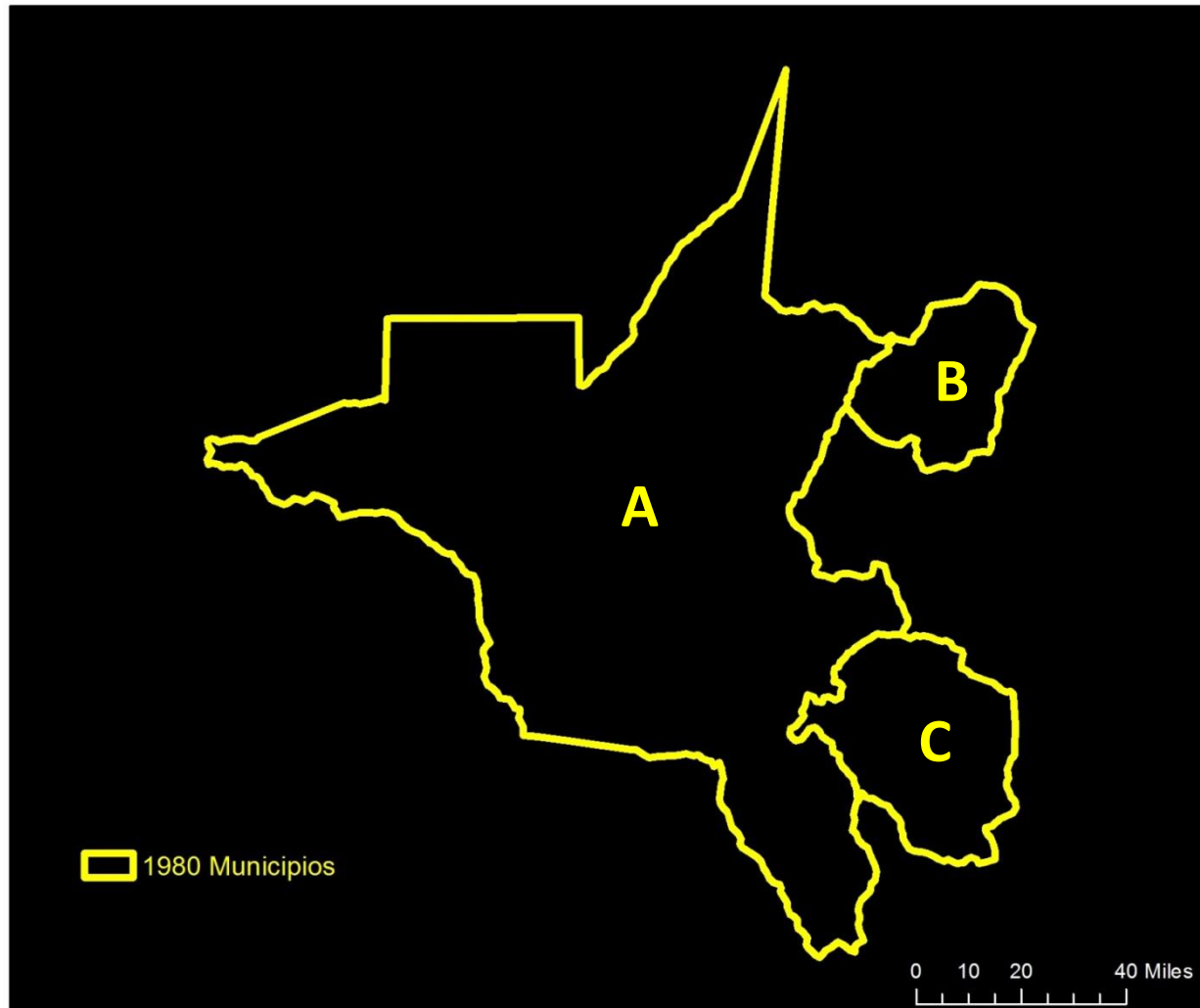
China 1990

Boundaries change over time

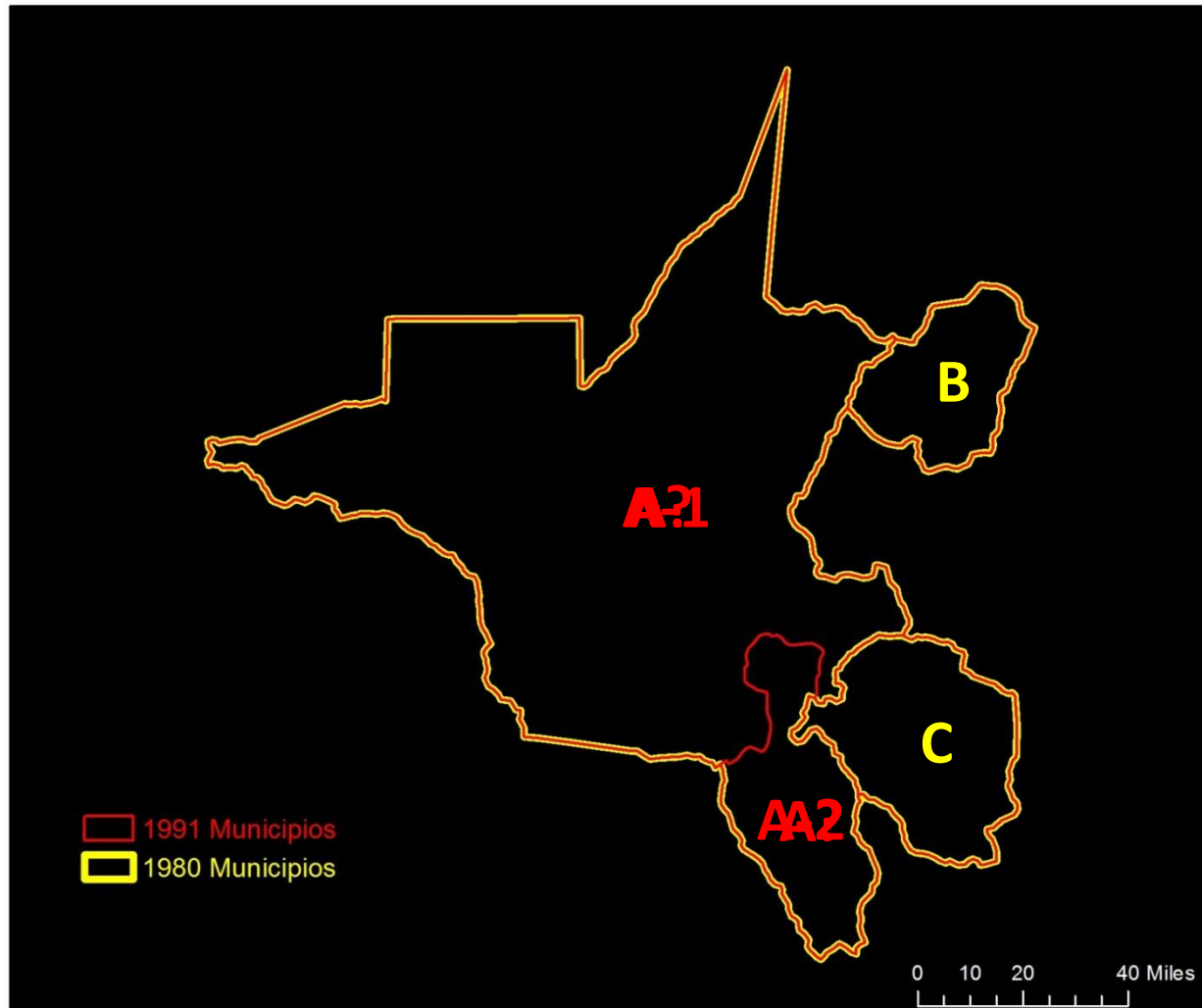


China

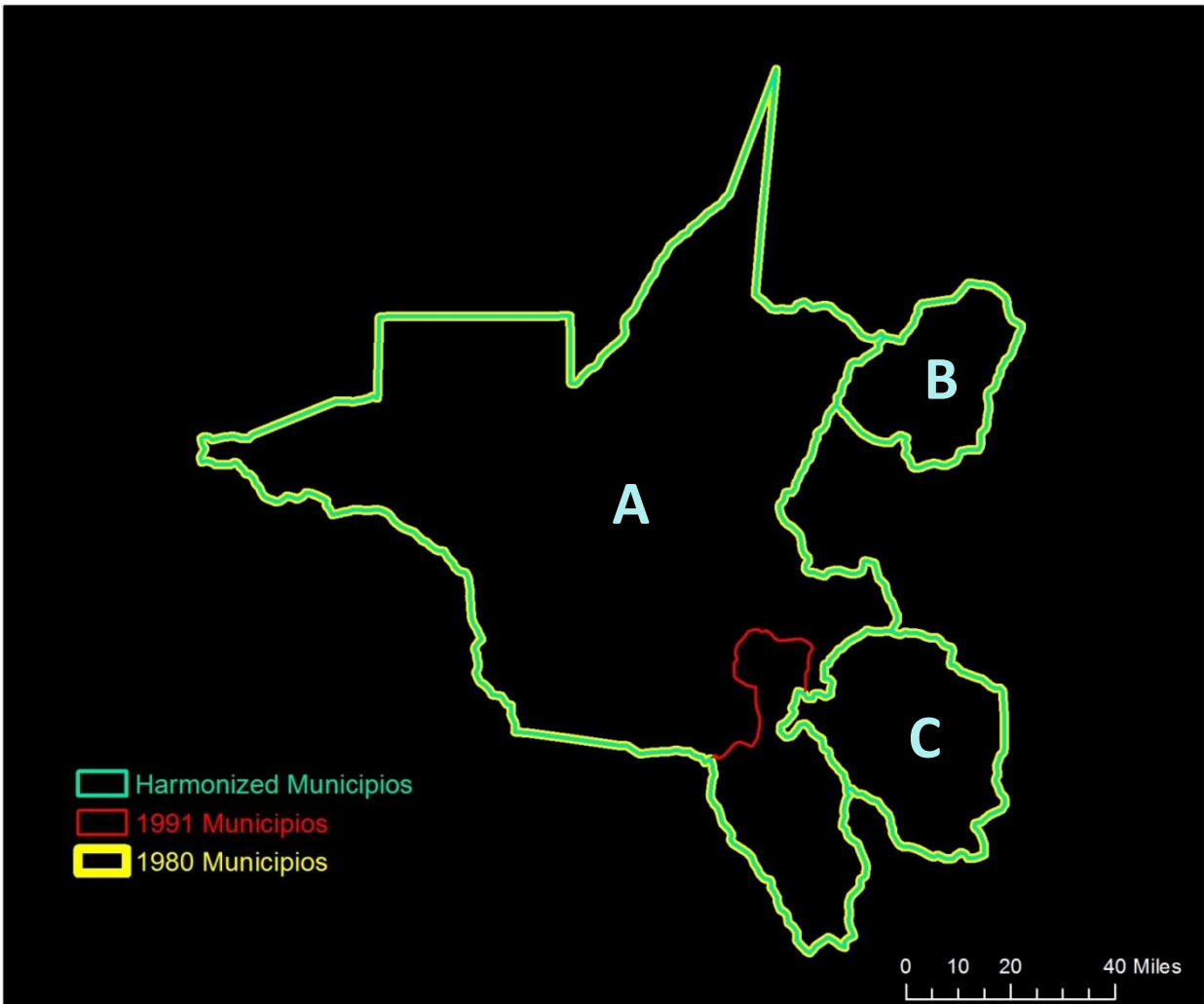
Spatial and temporal harmonization



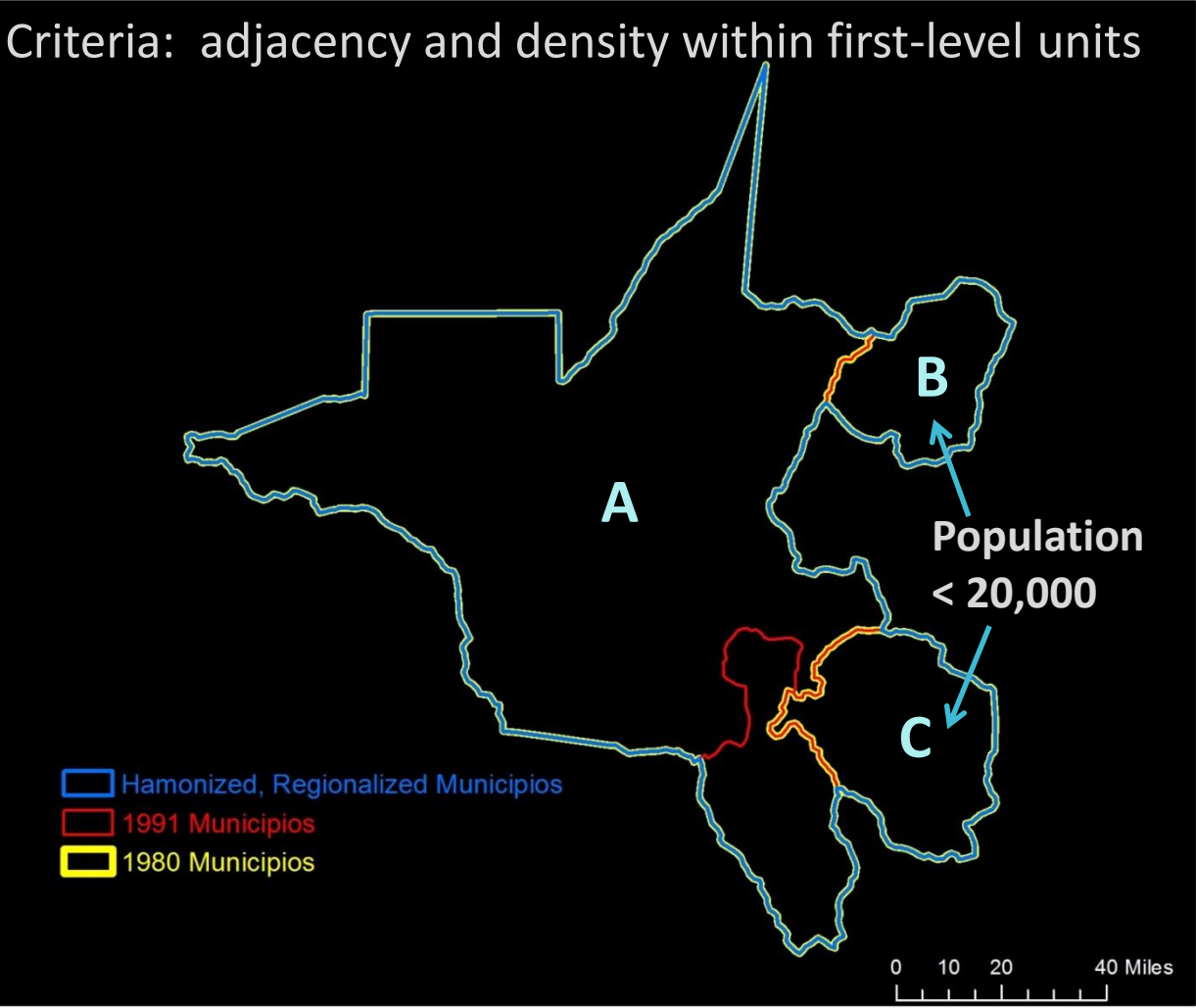
Spatial and temporal harmonization



Spatial and temporal harmonization

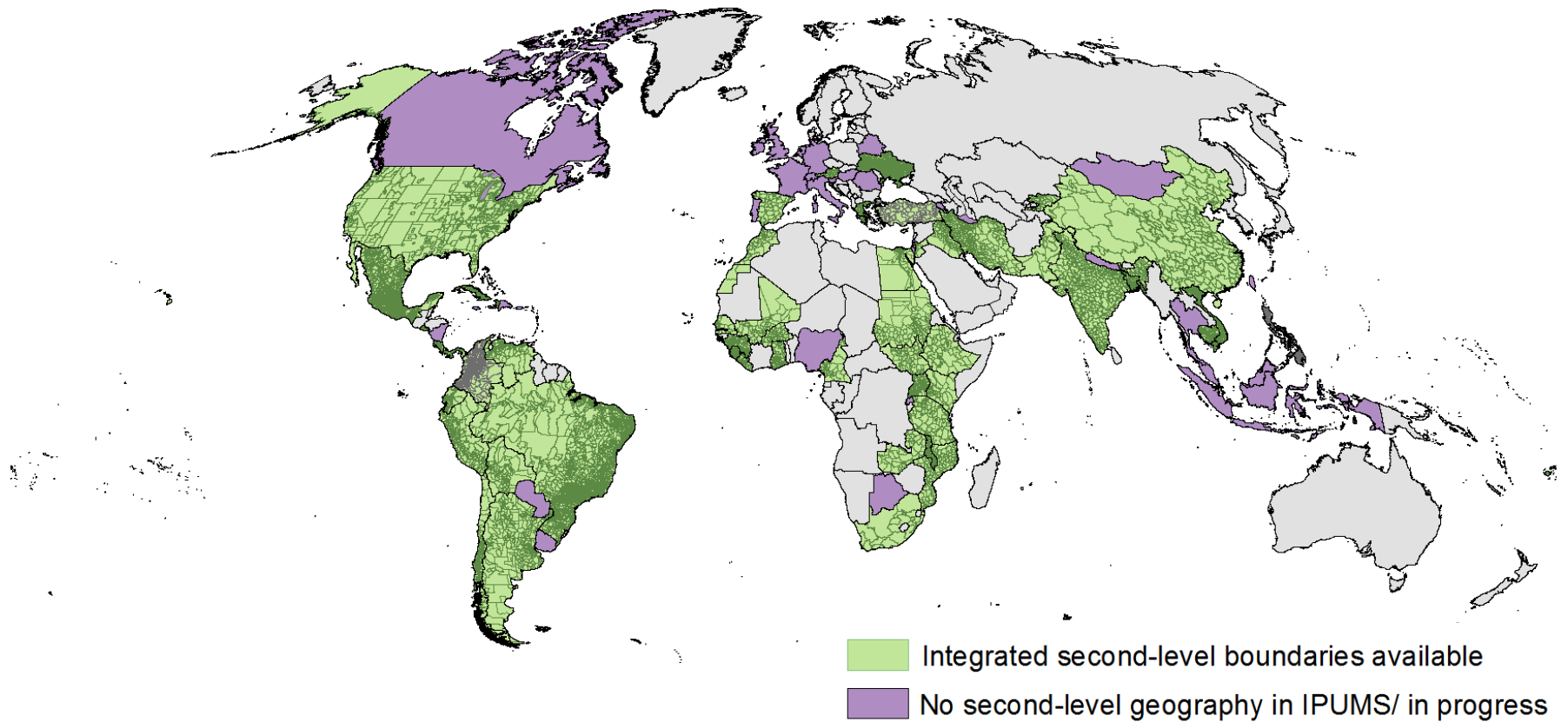


Regionalization (confidentialization)

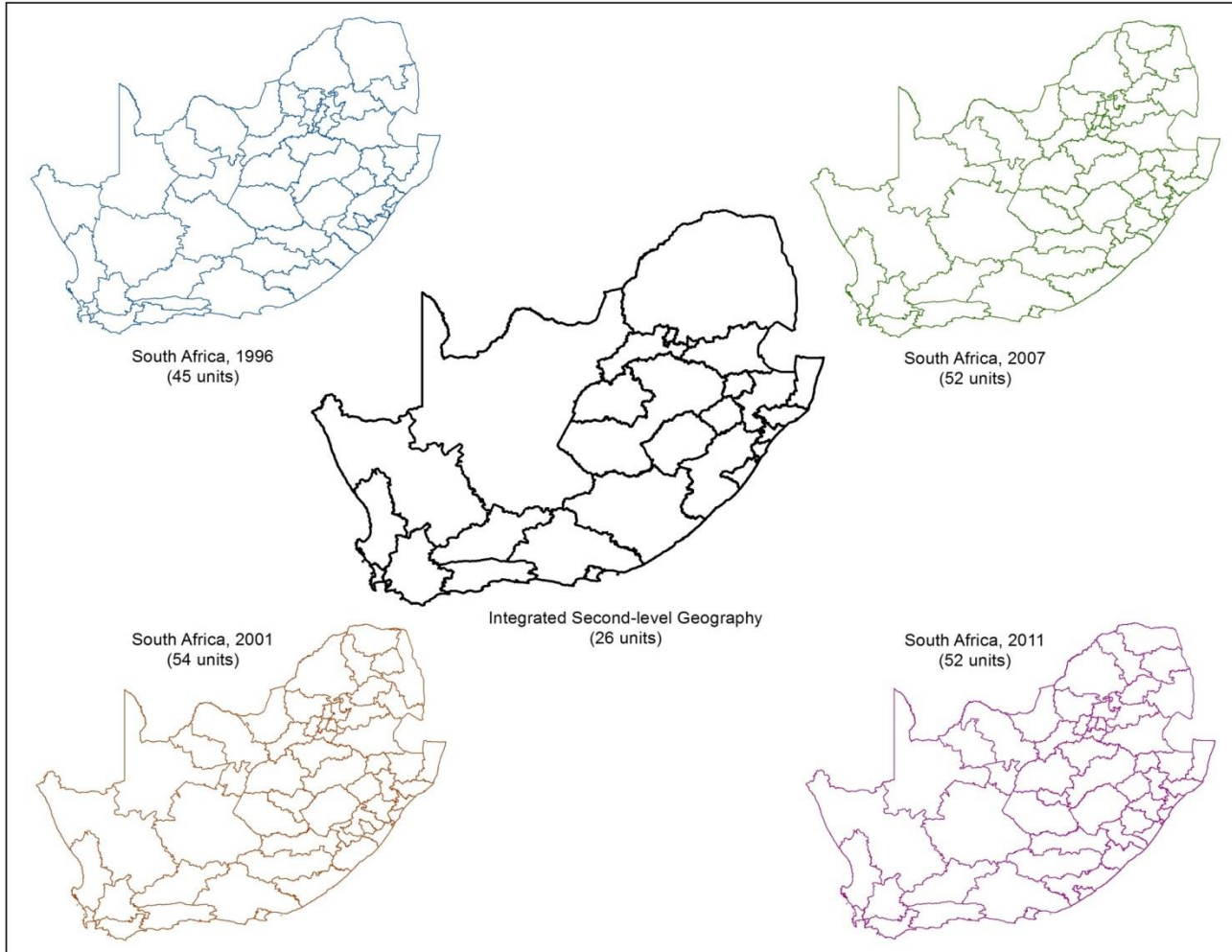


Harmonized-regionalized geography

Second-level geography in IPUMS



Year-specific geography



Harmonizing by space and time

code	label	missing	mw1987a	mw1998a	mw2008a
rectype	GEO1_MW			H	H
columns	Malawi, District 1998 - 2008 [Level 1: consistent boundaries, GIS]				
norecode					
hide					
proj1			MW1987A_0021	MW1998A_0021	MW2008A_0022
proj2					
proj3					
proj4					
proj5					
proj6					
<tt>					
	# Northern Region				
454101	Chitipa		101 = Chitipa {1982}	101 = Chitipa {2581}	101 = Chitipa {3832}
454102	Karonga		102 = Karonga {2787}	102 = Karonga {4011}	102 = Karonga {5758}
454103	Nkhata Bay, Likoma				
454103	Nkhata Bay		103 = Nkhata Bay {2781}	103 = Nkhata Bay {3340}	103 = Nkhata Bay {4311}
454103	Likoma		106 = Likoma {154}	106 = Likoma {155}	106 = Likoma {229}
454104	Rumphi		104 = Rumphi {1992}	104 = Rumphi {2539}	104 = Rumphi {3808}
454105	Mzimba, Mzuzu city				
454105	Mzimba (1998)		105 = Mzimba {9355}	105 = Mzimba {11728}	
454105	Mzimba (2008)				105 = Mzimba {14314}
454105	Mzuzu city (2008)				107 = Mzuzu City {3043}
	# Central Region				
454201	Kasungu		201 = Kasungu {7245}	201 = Kasungu {9687}	201 = Kasungu {13096}
454202	Nkhota Kota		202 = Nkhotakota {3930}	202 = Nkhota Kota {5006}	202 = Nkhota Kota {6273}
454203	Ntchisi		203 = Ntchisi {2639}	203 = Ntchisi {3617}	203 = Ntchisi {4754}
454204	Dowa		204 = Dowa {7180}	204 = Dowa {9045}	204 = Dowa {12407}
454205	Salima		205 = Salima {4713}	205 = Salima {5869}	205 = Salima {7737}
454206	Lilongwe, Lilongwe city				
454206	Lilongwe (1998)		206 = Lilongwe {22720}	206 = Lilongwe {31102}	
454206	Lilongwe (2008)				206 = Lilongwe {27562}
454206	Lilongwe city (2008)				210 = Lilongwe City {15651}
454207	Mchinji		207 = Mchinji {5687}	207 = Mchinji {7086}	207 = Mchinji {9917}
454208	Dedza		208 = Dedza {9551}	208 = Dedza {11404}	208 = Dedza {14652}
454209	Ntcheu		209 = Ntcheu {8114}	209 = Ntcheu {8558}	209 = Ntcheu {11312}
	# Southern Region				
454301	Mangochi		301 = Mangochi {12315}	301 = Mangochi {15214}	301 = Mangochi {18518}
454302	Machinga		302 = Machinga {7595}	302 = Machinga {9020}	302 = Machinga {11477}
454303	Zomba, Zomba city				
454303	Zomba (1998)		303 = Zomba {11033}	303 = Zomba {13836}	
454303	Zomba (2008)				303 = Zomba {14241}
454303	Zomba city (2008)				314 = Zomba City {2545}
454304	Chiradzulu		304 = Chiradzulu {5002}	304 = Chiradzulu {5879}	304 = Chiradzulu {7226}
454305	Blantyre, Blantyre city				
454305	Blantyre (1998)		305 = Blantyre {14452}	305 = Blantyre {19929}	
454305	Blantyre (2008)				305 = Blantyre {8417}
454305	Blantyre city (2008)				315 = Blantyre City {15631}
454307	Thyolo		307 = Thyolo {10232}	307 = Thyolo {11301}	307 = Thyolo {14254}
454308	Mulanje		308 = Mulanje {10041}	308 = Mulanje {10445}	308 = Mulanje {12776}
454309	Phalombe		309 = Phalombe {5319}	309 = Phalombe {5965}	309 = Phalombe {7568}
454310	Chikwawa		310 = Chikwawa {6961}	310 = Chikwawa {8002}	310 = Chikwawa {9691}
454311	Nsanje		311 = Nsanje {4689}	311 = Nsanje {4357}	311 = Nsanje {5301}
454312	Balaka		312 = Balaka {4968}	312 = Balaka {6071}	312 = Balaka {7569}
454313	Mwanza, Neno				
454313	Mwanza (1998)		306 = Mwanza {2833}	306 = Mwanza {3258}	
454313	Mwanza (2008)				306 = Mwanza {2241}
454313	Neno (2008)				313 = Neno {2496}
</tt>					
<univ>					
mw1998a mw2008:[all]					
</univ>					

1987	Rural %	Urban %
Mzimba/Mzuzu city	87.1	12.2
Lilongwe/Lilingwe city	77.6	22.4
Blantyre/ Blantyre city	42.0	58.0

1998	Rural %	Urban %
Mzimba/Mzuzu city	83.7	16.3
Lilongwe/Lilingwe city	67.4	32.6
Blantyre/ Blantyre city	37.7	62.3

2008	Rural %	Urban %
Mzimba/Mzuzu city	82.1	17.9
°Lilongwe/Lilingwe city	64.6	34.1
*Blantyre/ Blantyre city	36.1	58.2

° 1.4% unknown

* 5.7% unknown

GIS workshop: geographic expertise



Country NSOs send:

- Geographic experts
- Paper maps or images

IPUMS, ESRI, and funders provide:

- Digital camera
- Tripod
- 1-year ArcGIS license
- Digitization training

Outcomes:

- Digital maps
- Code-matched to census units
- Harmonization incorporates local expertise



UN Sustainable Development Goals

Measurable with Census Microdata

Goal #	Title	
1.4:	Proportion of population living in households with access to basic services	
3.2:	Under-five mortality rate (deaths per 1,000 live births)	
3.7:	Universal access to sexual and reproductive health-care	Microdata for Disaggregation
3.c:	Health care workers	
4.1:	Enrollment ratios by level and type of education	
4.3:	Enrollment ratios by level and type of technical, vocational, and tertiary education	
4.4:	Percentage of people participating in education or training (skill development focus)	
4.5:	Parity indices in education	
4.6:	Literacy and numeracy (limited capacity to measure literacy, no questions on numeracy)	
4.c:	Supply of qualified teachers	
5.3:	Early marriage	
5.5:	Women's participation in societal decision-making	
6.1:	Percentage of population using safely managed drinking water services	
6.2:	Percentage of population using safely managed sanitation services	
7.1:	Modern energy services, electricity	
7.2:	Renewable energy, fuels	
8.3:	Share of informal employment in non-agriculture employment by sex	
8.5:	Full and productive employment	
8.6:	Percentage of youth (15-24) not in education, employment, or training (NEET)	
8.7:	Child labor	
9.2:	Inclusive industrialization	
9.5:	Enhance scientific research	

SDG GOAL 8.6.1: Proportion of youth (aged 15-24) not in education, employment or training (NEET)

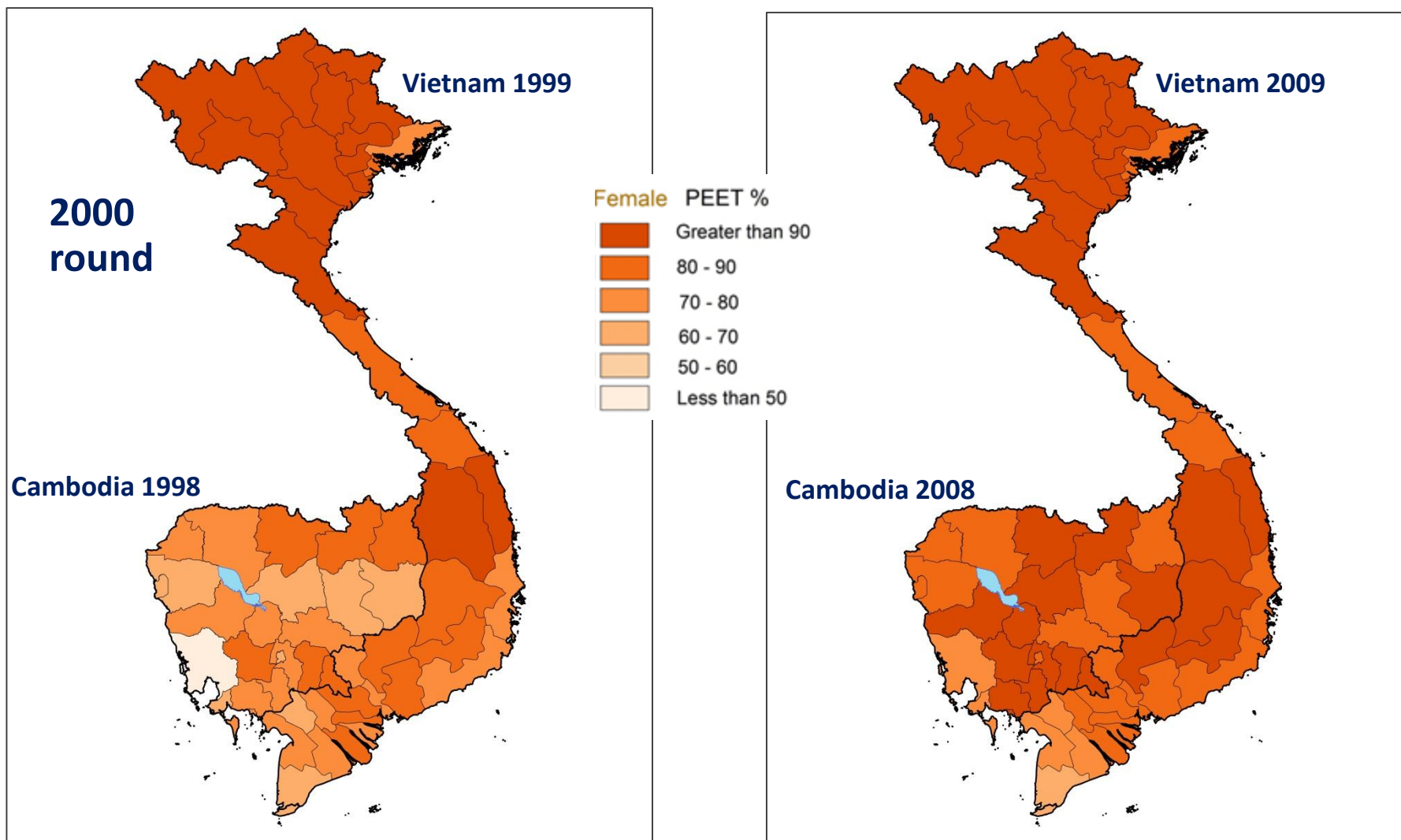
**Reconfigured to positive measure:
Percentage in Employment, Education or Training (PEET)**

1st Administrative level disaggregation

- **Cambodia and Vietnam**
- **2000 and 2010 round censuses**
- **Mapped by sex**

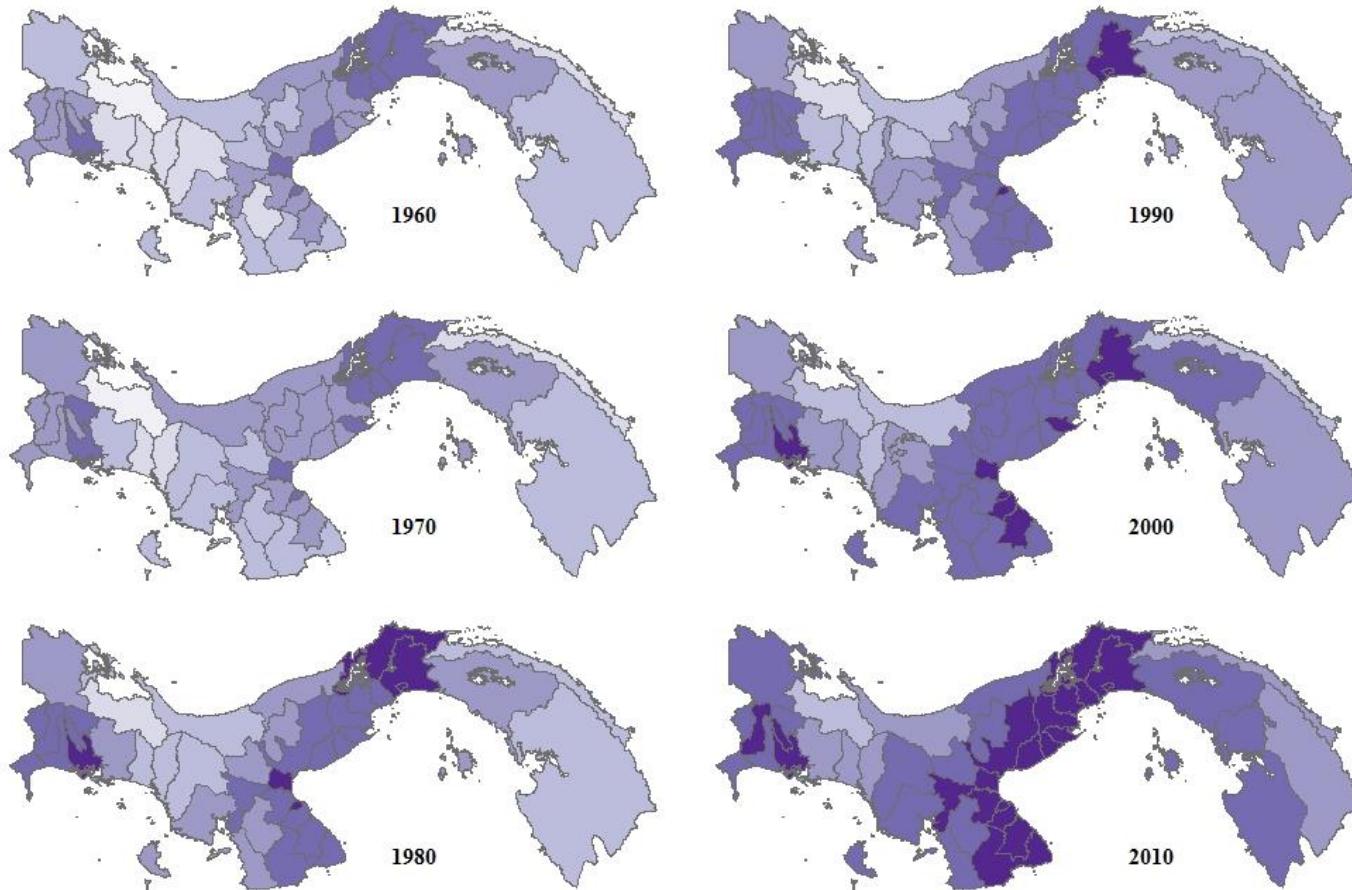
Percentage in Employment, Education or Training (PEET) Cambodia (1998, 2008) and Vietnam (1999, 2009)

Females age 15-24

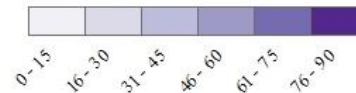


Spatially consistent geography

Changes in literate population 1960 to 2010, Panama

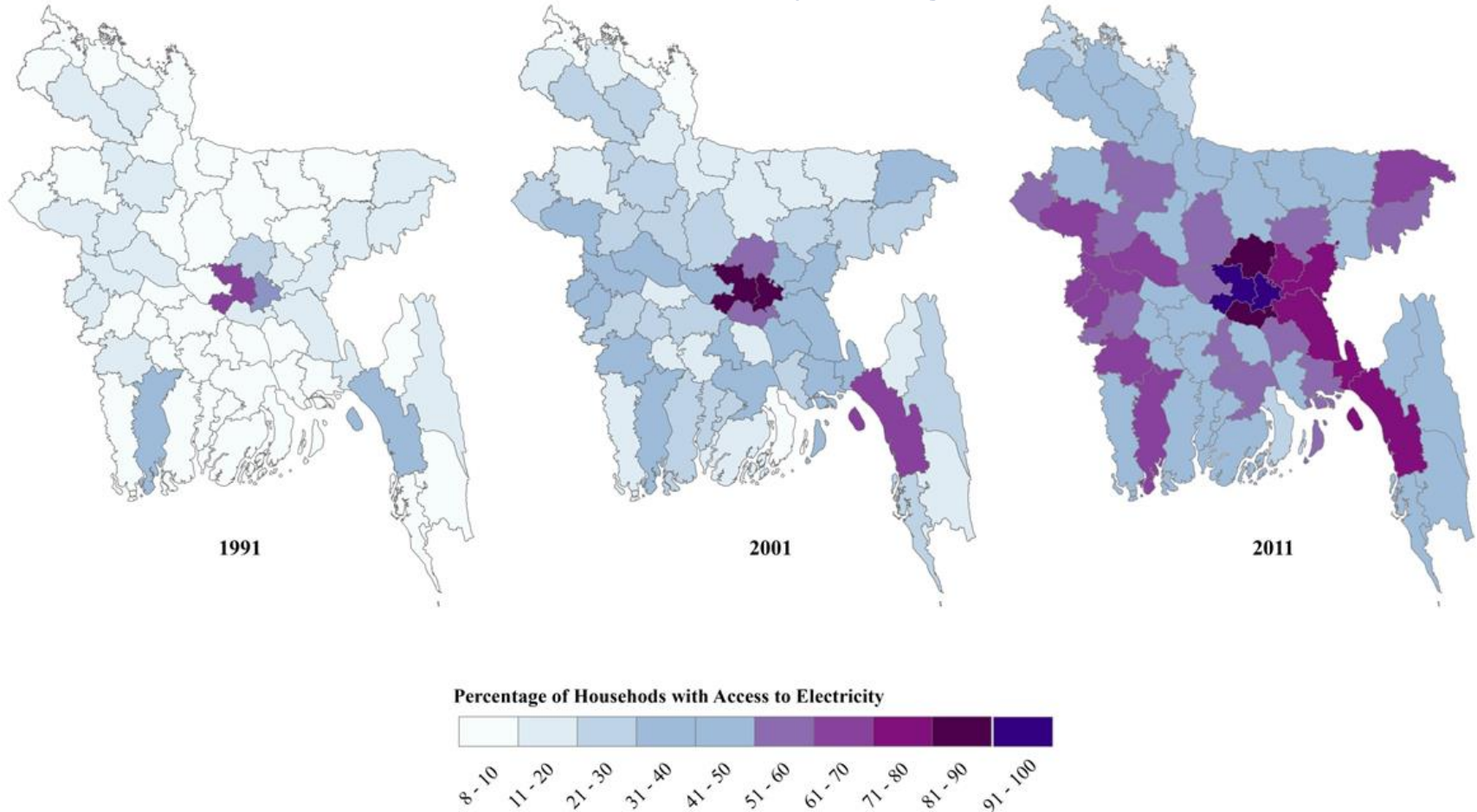


Percentage of Literate Population



Spatially consistent geography

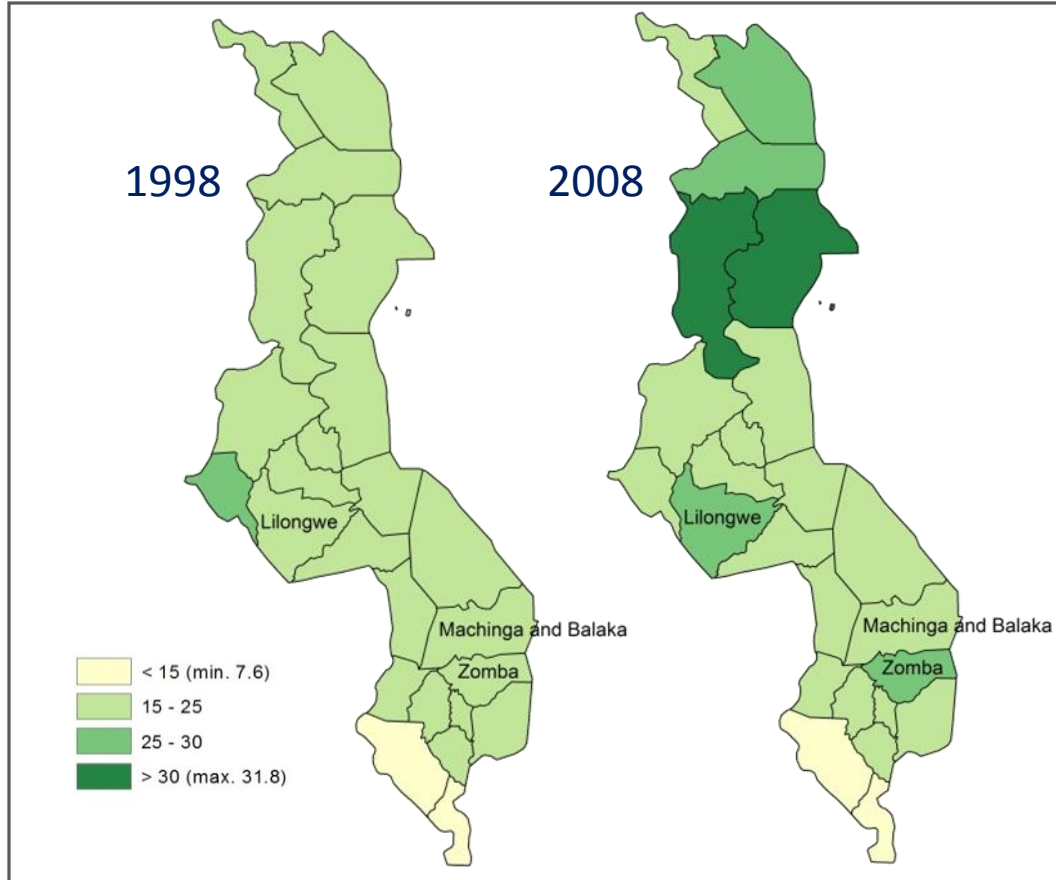
Household Access to Electricity, Bangladesh (1991-2011)



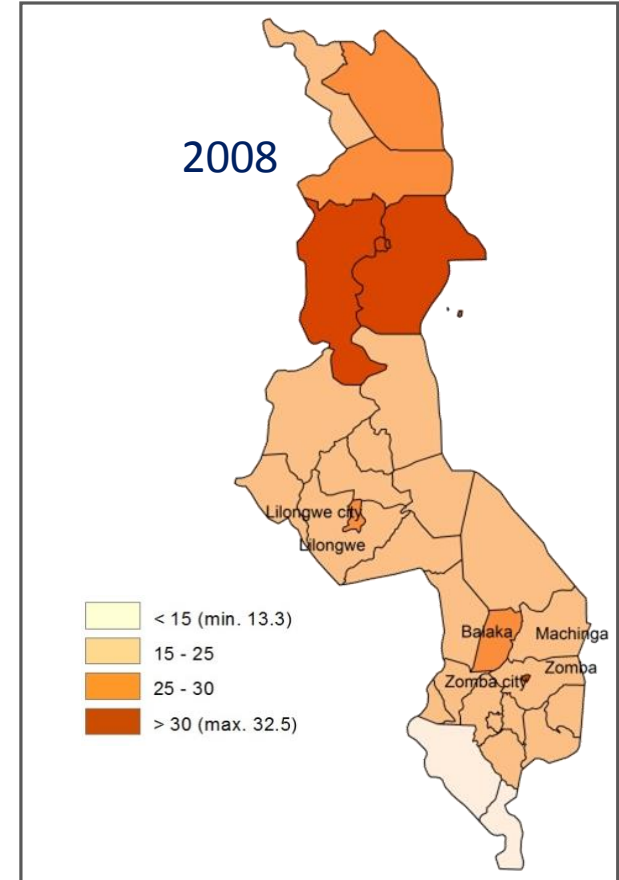
Utility of year-specific detail

% of Females Employed in Wage Labor

SPATIALLY CONSISTENT BOUNDARIES



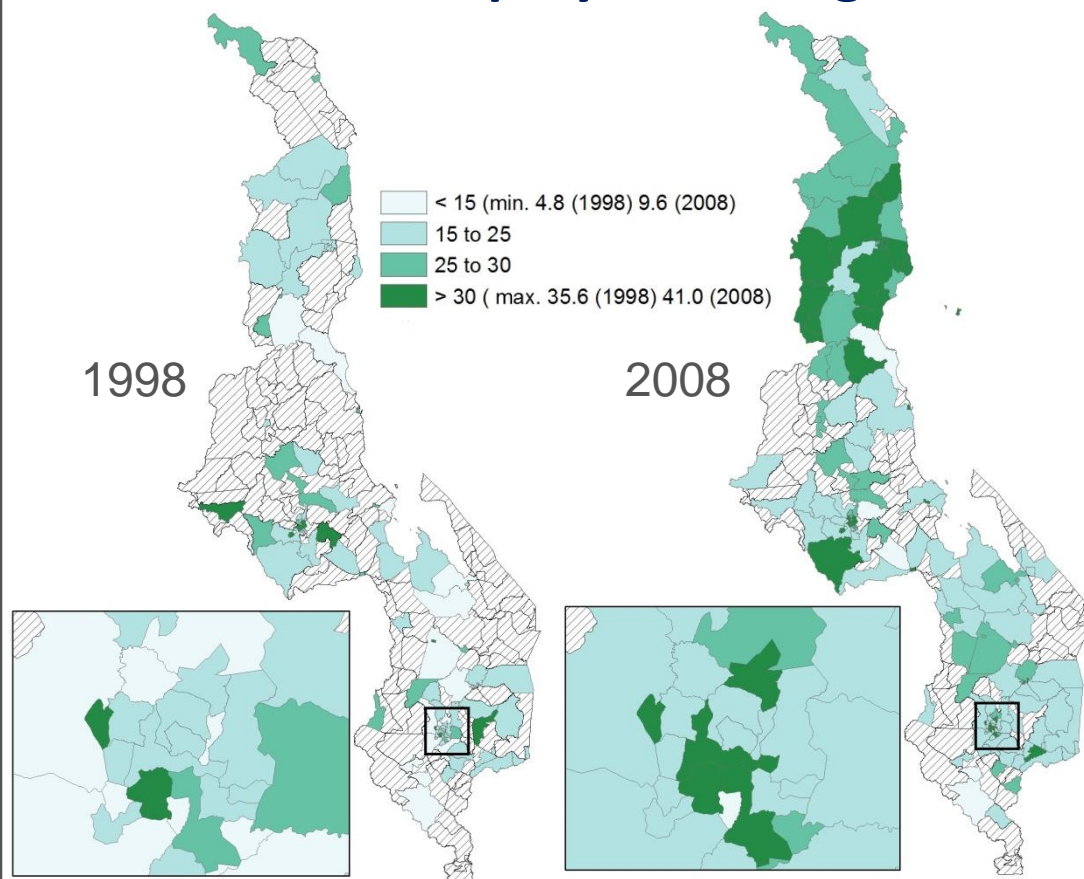
YEAR-SPECIFIC BOUNDARIES



Malawi, Districts

Advantages and limitations of small units

% of Females Employed in Wage Labor



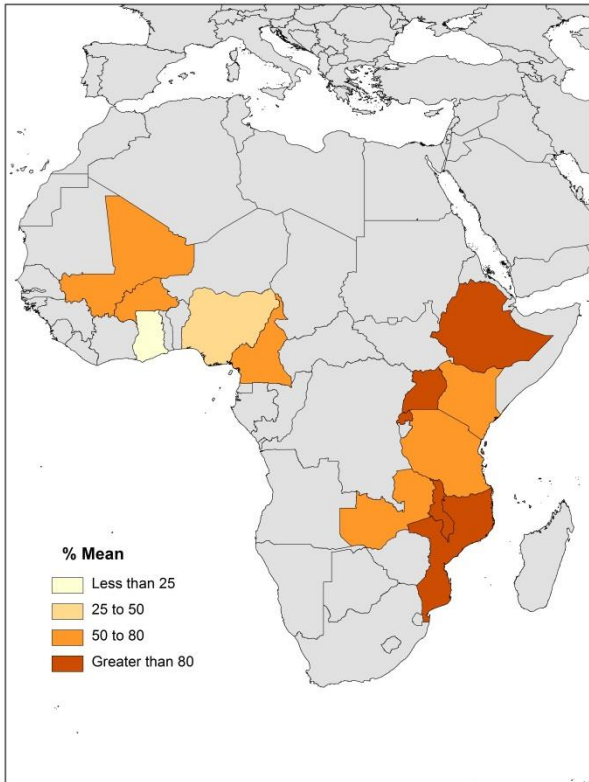
- Precision and detail in highly populated urban areas
- Enables targeted policy response
- Facilitates quasi-experimental design research
- Data “too thin” in some areas = limits of small areas and sample data

Malawi, Traditional Authorities

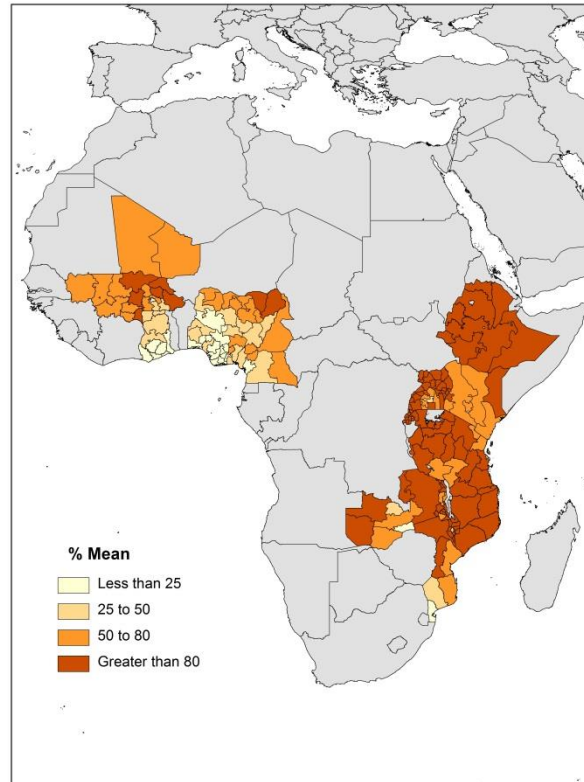
Multi-scale options

Percentage of children who are less than 5 years old and live in a dwelling with dirt floor, Africa (single census per country 2000s)

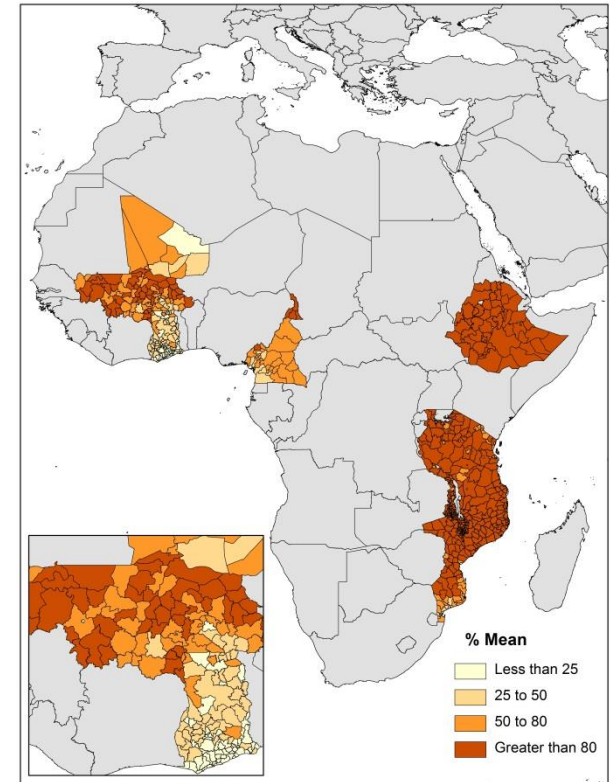
Country



1st Admin level



2nd Admin level



Conclusions

Microdata

- Essential for data disaggregation
- Facilitate appropriate aggregation calculations

Value added by IPUMS to meet mapping needs

- GIS Boundary files
- Year-specific geographic units and maps
- Cross-temporally consistent units and maps
- Available at country-level as well as 1st and 2nd Administrative Units where possible

UN-DESA Encourages Microdata Dissemination



United Nations
Department of Economic and Social Affairs



Resolution 2016/1 UN Commission on Population and Development
**Strengthening the demographic evidence base for the
2030 Agenda for Sustainable Development**

22. Encourages Governments to adopt open-data policies allowing *the dissemination of public-use, geo-referenced and anonymized microdata from censuses, household surveys, civil registration, population registers, health information systems and other relevant administrative records with respect for confidentiality;*

<http://www.un.org/en/development/desa/population/pdf/commission/2016/documents/CPD49%20Resolution%202.pdf>

IPUMS
International



Thank You!

Lara Cleveland
cleveland@umn.edu

ipums.org
ipums@umn.edu