



Actions for improving statistical literacy in Slovenia

Genovefa Ružič, Karmen Hren
Statistical Office of the Republic of Slovenia



Building bridges for a better society:

Why?

How?

What?

What's next?



Why?

- ‚Bridging the gap‘ between official statistics and different parts of society
- Increasing awareness of the importance of official statistics
- Usage of statistical data on greater scale
- Staying relevant for society
- Enhanced cooperation inside the statistical community



How?

- No formal organisational structure
- Through day-to-day activities
- SURS as the forerunner in promoting statistical literacy, but not the only one
- No one-size-fits-all approach
- Users' centered

Labour Day

✉ Release subscription

In 2015, 88.6% persons in paid employment, 11.4% self-employed and 12.3% registered unemployed

In 2015 there were more than 804,600 persons in employment in Slovenia; their average age was 41.8 years. Most people were employed in manufacturing (24.4%). On average 39.3 hours were worked per week. Two thirds of all persons in paid employment received gross earnings below EUR 1,637.



© Matej Leskovsek, STA



Labour Day is an international holiday celebrated on 1 May by most of the countries. It is dedicated to the memory of the events that took place in Chicago in 1886 when workers demanded an eight-hour working day, while the police stifled their demonstrations and several people were killed.

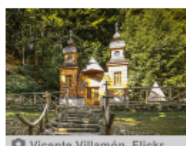
In Slovenia, Labour Day has been celebrated as a national holiday since 1948. The symbols of May Day celebrations is a carnation. On the eve of the holiday bonfires are lit and many celebrations are held on the day. Slovenia is the only EU Member State in which Labour Day is a two-day holiday (1st and 2nd May). In 2016, people in Slovenia have 13 days of national holidays (9 of them are days off).

100th Anniversary of the Russian Chapel

✉ Release subscription

The tragedy under the Vršič pass brought the two nations together

The Russian Chapel was erected in memory of the Russian prisoners who were buried by an avalanche in 1916 while building a mountain road over Vršič.



© Vicente Villamón, Flickr

Do you know how many Russians live in Slovenia? Or visit Slovenia? What are Slovenia's exports/imports to/from the Russian Federation?



The Russian Chapel is an unusual World War I monument. It was erected in memory of the suffering and death of numerous Russian prisoners who were buried by an enormous avalanche in March 1916 while building a mountain road over the 1,611 m mountain pass Vršič.

Since that unfortunate event 100 years have passed. The memory of the suffering of the Russian prisoners brought the two nations together and – in different areas and forms – are still bringing them together. Stories about that are told by statistical data selected for this release.

Do you know how many Russian tourists visit Slovenia and make overnight stays in our country? What are Slovenia's exports/imports to/from the Russian Federation? How many Russians are there among the Slovene population? What is their age structure, their educational structure, their employment status? In which of the Slovene statistical regions do they live? How many upper secondary school pupils learn Russian?

National Accounts on the Economic Crisis in Slovenia



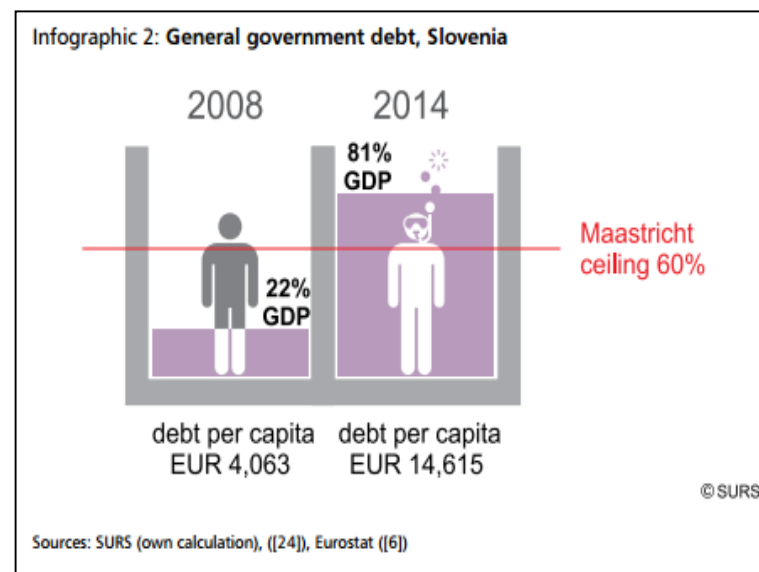
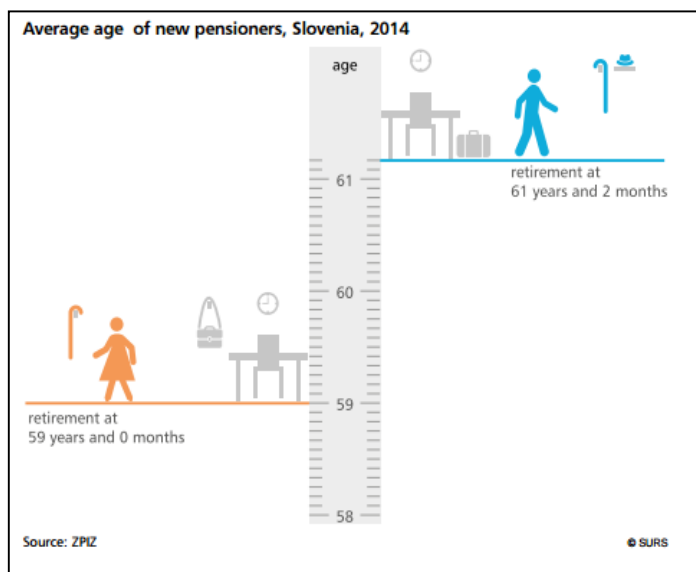
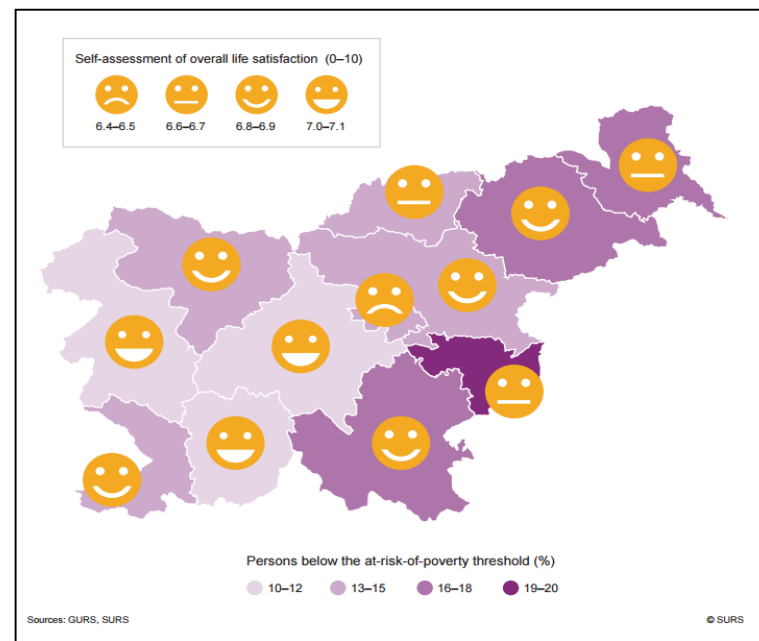
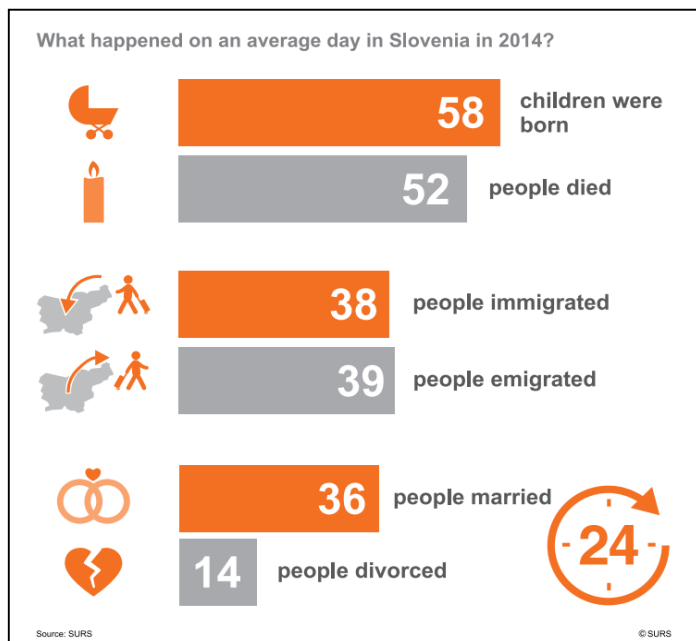
www.stat.si/eng

Confirm or reject the statement or simply read the explanation.

Labour in Slovenia is taxed more than in other EU Member States.

NOT TRUE: The public in Slovenia believes that compared to other EU Member States labour in Slovenia is taxed more; however, this is not true. The international comparison shows that Slovenia is 17th among the EU Member States in terms of personal income tax revenue and 5th in terms of revenue from social contribution as a share of GDP. It is characteristic of Slovenia that revenue from social contributions of employees represents the largest share of GDP, which ranks Slovenia first in the EU. Despite that, this does not mean that labour in Slovenia is taxed more than in the EU overall, since every Member State has its own system of collecting taxes and financing social expenditure. In international comparisons of labour taxation it is therefore more appropriate to use implicit tax rates (ITR).

What? (examples)





What? (examples)

Names and birthdays



STAGE



Is Jerusalem really just
170 km from Ljubljana?



REPUBLIC OF SLOVENIA
STATISTICAL OFFICE

Yes, Jeruzalem in Slovenia with
the population of **43** really is.

stat.si
/eng

Wanna grab a beer?



REPUBLIC OF SLOVENIA
STATISTICAL OFFICE

An average person in Slovenia drinks
26 litres of beer a year.

stat.si
/eng

Know any jailbirds?



REPUBLIC OF SLOVENIA
STATISTICAL OFFICE

Every year about **1,200** people
in Slovenia are sentenced to jail.

stat.si
/eng



What's next?

- Include statistical topics in the curriculum at all school levels
- More emphasis on relevance of statistical data for potential users (what problems to solve, what life situations to address)
- Measure the impact (outcome) of all activities (the level of statistical literacy), to enable a more thorough evaluation